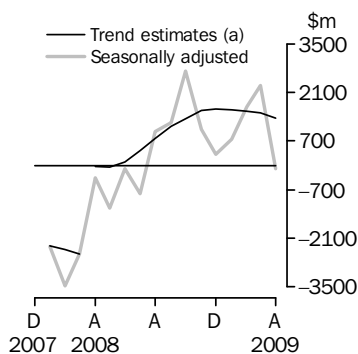


INTERNATIONAL TRADE IN GOODS AND SERVICES

AUSTRALIA

EMBARGO: 11.30AM (CANBERRA TIME) THURS 4 JUN 2009

Balance on Goods and Services



(a) A trend break of \$2,725m has been applied to April 2008.

KEY FIGURES

	February 2009	March 2009	April 2009	Mar 09 to Apr 09 %
	\$m	\$m	\$m	change
BALANCE ON GOODS AND SERVICES				
Trend estimates	1 569	1 507	1 369	-9
Seasonally adjusted	1 683	2 302	-91	..
CREDITS (Exports of goods & services)				
Trend estimates	24 030	23 397	22 819	-2
Seasonally adjusted	24 549	24 440	21 680	-11
DEBITS (Imports of goods & services)				
Trend estimates	22 461	21 890	21 450	-2
Seasonally adjusted	22 866	22 138	21 771	-2

.. not applicable

KEY POINTS

BALANCE ON GOODS AND SERVICES

- The trend estimate of the *balance on goods and services* was a surplus of \$1,369m in April 2009, a decrease of \$138m (9%) on a revised surplus in March 2009.
- In seasonally adjusted terms, the *balance on goods and services* was a deficit of \$91m in April 2009, a turnaround of \$2,393m on a revised surplus in March 2009.

CREDITS (EXPORTS OF GOODS & SERVICES)

- Seasonally adjusted, *goods and services credits* fell \$2,760m (11%) to \$21,680m. *Non-rural goods* fell \$1,692m (12%), *other goods* fell \$784m (34%) and *rural goods* fell \$320m (11%). *Services credits* rose \$34m (1%).
- The fall in *non-rural goods* largely reflects the falls in the *coal, coke and briquettes* component, down \$619m (15%), and the *metal ores and minerals* component, down \$430m (10%). Prices declines were driving the falls in these components. The largest fall in *other goods* was in the *non-monetary gold* component, down \$783m (37%).

DEBITS (IMPORTS OF GOODS & SERVICES)

- Seasonally adjusted, *goods and services debits* fell \$367m (2%) to \$21,771m. *Other goods* fell \$463m (35%), mainly due to a fall in non-monetary gold, down \$305m (32%). *Capital goods*, down \$47m and *consumption goods*, down \$38m both fell 1%. *Intermediate and other merchandise goods* rose \$160m (2%) and *services debits* rose \$20m.

INQUIRIES

For further information contact Selvi Sekhar on Canberra (02) 6252 5540 for goods, and Karen McGuigan on Canberra (02) 6252 5415 for services.

NOTES

FORTHCOMING ISSUES

ISSUE	RELEASE DATE
May 2009	2 July 2009
June 2009	5 August 2009
July 2009	3 September 2009
August 2009	6 October 2009
September 2009	5 November 2009
October 2009	9 December 2009



REVISIONS

Revisions were made to merchandise trade data for the previous six months to incorporate the latest available administrative data. There were no revisions to the balance of payments series in original terms. However, the seasonally adjusted and trend estimates have been revised due to the use of concurrent seasonal adjustment (see paragraph 8 in the explanatory notes).

AVAILABILITY OF RELATED DATA

As advised in previous issues, the services 2008 calendar year time series data cubes (other than table 9) will be released on 17 June 2009. Table 9 was released with the March issue of this publication.

A new services table, 'Table 12 International trade in services, credits, education related travel, by educational sector, by type of expenditure by year' will be available from 17 June 2009 on a calendar year basis.

INFORMATION PAPER

The *Information paper: Revisions to international standards in monthly international trade in goods and services statistics from August 2009* (cat. no. 5368.0.55.012) will be released on 17 June 2009. This paper outlines the changes to the international standards and the impact on the presentation of statistics in this publication. It describes the background to the changes, the timing of the changes, and provides mock-ups of the proposed publications and related spreadsheets.

A separate information paper (cat. no. 5302.0.55.002) advising the impact of changes to the international standards on the quarterly international accounts is scheduled to be released on 22 July 2009.

IRON ORE AND COAL PRICES

An adjustment has been made to the value of iron ore exports in the Balance of Payments series. For details see page 4 - Commodity prices adjustment.

Peter Harper
Acting Australian Statistician

CONTENTS

page

Commodity prices adjustment	4
Time series data	5

ANALYSIS

Analysis and comments	6
---------------------------------	---

TABLES

INTERNATIONAL TRADE IN GOODS AND SERVICES – BALANCE OF PAYMENTS BASIS

1 Goods and services, summary, seasonally adjusted and trend estimates	10
2 Goods and services, summary, original	11
3 Goods credits, original	12
4 Goods debits, original	13
5 Goods credits, seasonally adjusted	14
6 Goods debits, seasonally adjusted	15
7 Goods credits, trend estimates	16
8 Goods debits, trend estimates	17
9 Services, summary, original	18
10 Services, summary, seasonally adjusted and trend estimates	19
11 Services, original, quarterly	20

INTERNATIONAL MERCHANDISE TRADE – RECORDED TRADE BASIS

12 International merchandise exports, by commodity	21
13 International merchandise imports, by commodity	24
14 International merchandise trade, by country and country groups	27
15 International merchandise trade, by state	28

OTHER TABLES

16 Period average exchange rates per Australian dollar	29
-------------------------------------------------------------------------	----

OTHER INFORMATION

Explanatory Notes	30
Appendix – Related articles	35

COMMODITY PRICES ADJUSTMENT

PRICES ADJUSTMENT

Recorded trade exports data presented for recent months in tables 12-15 of this publication are based on information initially reported by exporters to the Australian Customs Service (ACS). At the time of initial reporting to ACS the final prices may not be known for some commodities. Therefore, the information recorded for recent months for commodities like iron ore and coal can include a variety of prices including previous or current contract prices and the prevailing spot prices. New contract prices that have been recently negotiated, or are still being negotiated, are not fully reflected in the data first reported to ACS. As with commodity price changes in previous years, it is expected that the decreased prices resulting from the negotiation of new contracts will be updated progressively in revised information reported to ACS and then reflected in recorded trade data.

IRON ORE

The balance of payments data in this publication for April 2009 includes an adjustment for the anticipated price decrease for iron ore from April 1. As progressive revisions to the recorded trade prices are reported to ACS and then provided to the ABS they will be incorporated into the balance of payment series and the adjustment reduced accordingly.

In the unadjusted recorded trade series, the value of iron ore and concentrates decreased by 21% between March and April 2009 with volumes down 1% and prices down 20%. In the adjusted balance of payment series, the comparable item decreased 23%, with volumes down 1% and prices down 22%.

COAL

The price for coal has been steadily decreasing since December 2008. On a recorded trade basis, prices for metallurgical coal fell 20% and non-metallurgical coal (bituminous coal) fell 16% between March 2009 and April 2009. Because of the already observed falls in price, and historical patterns showing that adjustments to coal prices occur progressively, no adjustments have been made to the balance of payments series. This will be reviewed as future data are observed.

TIME SERIES DATA

TIME SERIES DATA

Data available free on the ABS web site include longer time series of tables in this publication and the additional spreadsheets and data cubes listed below.

- 31 Merchandise exports by Broad Economic Category (BEC)
- 32 Merchandise exports by industry of origin (ANZSIC)
- 33 Merchandise imports by Broad Economic Category (BEC)
- 34 Merchandise imports by Balance of Payments Broad Economic Category (BoPBEC)
- 35 Merchandise imports by industry of origin (ANZSIC)
- 36 Merchandise exports, state by country and country groups
- 37 Merchandise imports, state by country and country groups
- 91 Monthly seasonal adjustment factors and forward factors for 12 months.

TRADE IN SERVICES DATA CUBES

Trade in Services data are usually updated on an annual basis - with the March issue of this publication for calendar year and with the September issue for financial year.

The 2008 calendar year table 9 was released with the March issue of this publication but tables 1 to 8 and 10 to 12 will be released on 17 June 2009.

For financial year data cubes see cat. no. 5368.0.55.003 and for calendar year see 5368.0.55.004. The following tables are included in both sets of data cubes:

- 1 International trade in services, credits, state by year
- 2 International trade in services, credits, year by state
- 3 International trade in services, debits, state by year
- 4 International trade in services, debits, year by state
- 5 International trade in services, credits, year by country and service
- 6 International trade in services, credits, service by year and by country
- 7 International trade in services, debits, year by country and service
- 8 International trade in services, debits, service by year and by country
- 9 International trade in services, year by detailed service
- 10 International trade in services, credits, year by country and travel service
- 11 International trade in services, debits, year by country and travel service

In addition, the following table will be available on a calendar year basis from 17 June 2009 and a financial year basis from the September 2009 issue.

- 12 International trade in services, credits, education related travel, by educational sector, by type of expenditure by year.

ANALYSIS AND COMMENTS

BALANCE ON GOODS AND SERVICES

The trend estimate of the balance on goods and services was a surplus of \$1,369m in April 2009, a decrease of \$138m (9%) on a revised surplus in March 2009.

In seasonally adjusted terms, the balance on goods and services was a deficit of \$91m in April 2009, a turnaround of \$2,393m on a revised surplus in March 2009.

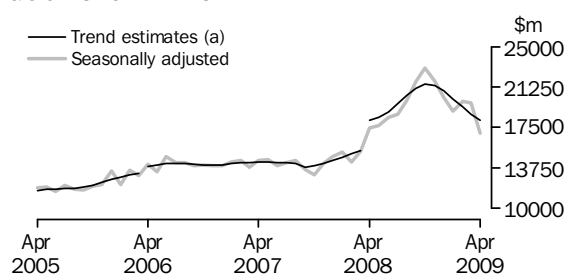
EXPORTS OF GOODS AND SERVICES

Between March 2009 and April 2009 the trend estimate of goods and services credits fell \$578m (2%) to \$22,819m.

In seasonally adjusted terms, goods and services credits fell \$2,760m (11%) to \$21,680m. Non-rural goods fell \$1,692m (12%), other goods fell \$784m (34%) and rural goods fell \$320m (11%). Services credits rose \$34m (1%).

Exports of goods

GOODS CREDITS



(a) Trend breaks of \$819m to April 2005, \$500m to April 2006 and \$2,725m to April 2008 have been applied.

RURAL GOODS

In trend terms, exports of rural goods rose \$9m to \$2,638m.

In seasonally adjusted terms, export of rural goods fell \$320m (11%) to \$2,519m.

The main component that contributed to the fall in the seasonally adjusted estimate of rural goods was cereal grains and cereal preparations, down \$234m (27%).

In original terms, exports of rural goods fell \$455m (15%) to \$2,530m.

NON-RURAL GOODS

In trend terms, exports of non-rural goods fell \$619m (4%) to \$13,490m.

In seasonally adjusted terms, exports of non-rural goods fell \$1,692m (12%) to \$12,950m.

The main components contributing to the fall in seasonally adjusted estimates were:

- coal, coke and briquettes, down \$619m (15%)
- metal ores and minerals, down \$430m (10%)
- other non-rural, down \$172m (17%)
- other manufactures, down \$143m (9%)
- transport equipment, down \$135m (33%)
- other mineral fuels, down \$133m (9%).

An adjustment has been made to the value of the metal ores and minerals component, for details see page 4 - Commodity Prices Adjustment.

In original terms, exports of non-rural goods fell \$2,536m (17%) to \$12,290m.

ANALYSIS AND COMMENTS *continued*

Exports of goods *continued*

OTHER GOODS

In trend terms, exports of other goods rose \$12m (1%) to \$2,028m.

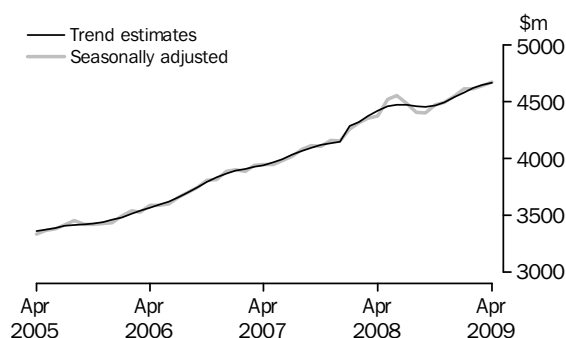
In seasonally adjusted terms, other goods fell \$784m (34%) to \$1,541m.

The main component contributing to the fall in seasonally adjusted estimates was non-monetary gold, down \$783m (37%).

In original terms, exports of other goods fell \$796m (34%) to \$1,531m.

Exports of services

SERVICES CREDITS



In trend terms, services credits rose \$19m to \$4,663m.

In seasonally adjusted terms, services credits rose \$34m (1%) to \$4,669m.

All components contributed to the rise in the seasonally adjusted estimates with:

- travel services, up \$20m (1%)
- other services, up \$12m (1%).

In seasonally adjusted terms, tourism related services credits rose \$19m (1%) to \$2,990m.

IMPORTS OF GOODS AND SERVICES

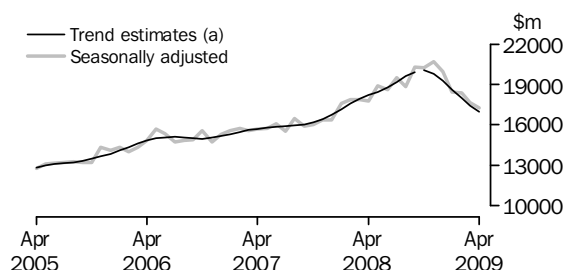
Between March 2009 and April 2009 the trend estimate of goods and services debits fell \$440m (2%) to \$21,450m.

In seasonally adjusted terms, goods and services debits fell \$367m (2%) to \$21,771m.

Other goods fell \$463m (35%), capital goods fell \$47m (1%) and consumption goods fell \$38m (1%). Intermediate and other merchandise goods rose \$160m (2%). Services debits rose \$20m.

Imports of goods

GOODS DEBITS



(a) A trend break of \$167m has been applied to Capital goods, n.e.s. debits and related aggregates in October 2008.

ANALYSIS AND COMMENTS *continued*

Imports of goods continued

CONSUMPTION GOODS

In trend terms, imports of consumption goods fell \$38m (1%) to \$4,954m.

In seasonally adjusted terms, imports of consumption goods fell \$38m (1%) to \$5,107m.

The main components contributing to the decrease in the seasonally adjusted estimates were:

- food and beverages, mainly for consumption, down \$50m (6%)
- textiles, clothing and footwear, down \$37m (5%).

These decreases were partly offset by the household electrical items component, up \$74m (18%).

In original terms, imports of consumption goods fell \$212m (4%) to \$4,732m.

CAPITAL GOODS

In trend terms, imports of capital goods fell \$71m (2%) to \$3,964m.

In seasonally adjusted terms, imports of capital goods fell \$47m (1%) to \$4,195m.

The components contributing to the decrease in the seasonally adjusted estimates were:

- machinery and industrial equipment, down \$273m (16%)
- industrial transport equipment n.e.s., down \$93m (22%)
- telecommunications equipment, down \$70m (12%).

Partly offsetting these falls was the capital goods n.e.s. component, up \$377m (42%).

In original terms, imports of capital goods fell \$341m (8%) to \$4,008m.

INTERMEDIATE AND OTHER MERCHANDISE GOODS

In trend terms, imports of intermediate and other merchandise goods fell \$259m (4%) to \$6,803m.

In seasonally adjusted terms, imports of intermediate and other merchandise goods rose \$160m (2%) to \$7,125m.

The main components contributing to the increase in the seasonally adjusted estimates were:

- other merchandise goods, up \$151m (196%)
- organic and inorganic chemicals, up \$65m (19%)
- fuels and lubricants, up \$39m (2%)
- iron and steel, up \$39m (12%).

Partly offsetting these increases were:

- processed industrial supplies n.e.s., down \$60m (3%)
- primary industrial supplies n.e.s., down \$46m (33%).

In original terms, imports of intermediate and other merchandise goods fell \$66m (1%) to \$6,990m.

ANALYSIS AND COMMENTS *continued*

Imports of goods continued

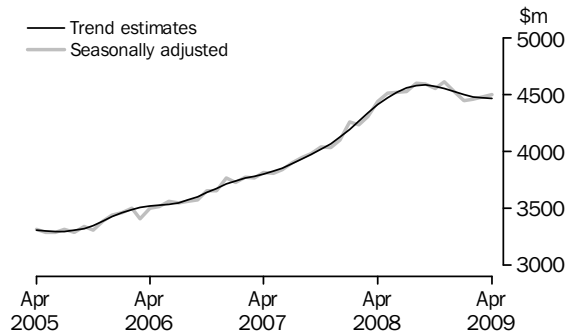
OTHER GOODS

In trend terms, imports of other goods fell \$68m (5%) to \$1,262m.

In both original and seasonally adjusted terms, other goods debits fell \$463m (35%) to \$842m. The main components contributing to this decrease were non-monetary gold, down \$305m (32%) and goods for processing, down \$165m (99%).

Imports of services

SERVICES DEBITS



In trend terms, services debits fell \$5m to \$4,466m.

In seasonally adjusted terms, services debits rose \$20m to \$4,502m.

The components contributing to the rise in the seasonally adjusted estimates were travel services, up \$53m (3%) and other services, up \$26m (2%) while transportation services fell \$58m (5%).

In seasonally adjusted terms, tourism related services debits rose \$38m (2%) to \$2,116m.

GOODS AND SERVICES(a), Summary: Seasonally Adjusted and Trend Estimates

Months	BALANCE	CREDITS					DEBITS					
	On goods and services	Total goods and services	Total goods	Rural goods(b)	Non-rural and other goods(b)	Total services	Total goods and services	Total goods	Con-sumption goods	Capital goods	Inter-mediate and other goods	Total services
	\$m	\$m	\$m	\$m	\$m	\$m	\$m	\$m	\$m	\$m	\$m	\$m
SEASONALLY ADJUSTED												
2008												
February	-3 482	18 619	14 310	2 109	12 201	4 309	-22 101	-17 871	-5 168	-4 052	-8 650	-4 230
March	-2 554	19 657	15 301	2 213	13 088	4 355	-22 210	-17 905	-5 163	-4 188	-8 554	-4 305
April	-359	21 855	17 481	2 431	15 049	4 374	-22 214	-17 776	-4 954	-3 815	-9 007	-4 438
May	-1 220	22 198	17 679	2 407	15 272	4 519	-23 418	-18 910	-5 240	-3 884	-9 786	-4 508
June	-104	22 994	18 441	2 250	16 190	4 553	-23 098	-18 579	-5 177	-4 159	-9 244	-4 518
July	-821	23 203	18 720	2 226	16 494	4 483	-24 025	-19 502	-5 146	-4 036	-10 320	-4 523
August	971	24 422	20 018	2 290	17 727	4 405	-23 451	-18 853	-5 065	-4 247	-9 541	-4 598
September	1 242	26 132	21 736	2 261	19 475	4 396	-24 890	-20 298	-5 099	-4 426	-10 773	-4 591
October	2 703	27 506	23 034	2 565	20 468	4 472	-24 803	-20 252	-5 234	-4 446	-10 572	-4 551
November	1 029	26 319	21 828	2 481	19 346	4 492	-25 290	-20 677	-5 339	-4 415	-10 923	-4 614
December	323	24 818	20 272	2 530	17 743	4 546	-24 495	-19 968	-5 433	-5 236	-9 299	-4 527
2009												
January	746	23 617	19 008	2 486	16 522	4 608	-22 871	-18 428	-5 170	-4 440	-8 818	-4 443
February	1 683	24 549	19 936	2 567	17 369	4 613	-22 866	-18 407	-4 481	-4 792	-9 134	-4 459
March	2 302	24 440	19 805	2 839	16 966	4 635	-22 138	-17 657	-5 145	-4 242	-8 270	-4 482
April	-91	21 680	17 011	2 519	14 491	4 669	-21 771	-17 269	-5 107	-4 195	-7 967	-4 502
TREND ESTIMATES												
2008												
February	-2 428	19 407	15 088	2 200	12 888	4 320	-21 836	-17 570	-5 096	-3 920	-8 554	-4 265
March	-2 552	19 711	15 341	2 265	13 077	4 370	-22 263	-17 922	-5 122	-3 968	-8 832	-4 341
April(c)	-35	22 583	18 162	2 300	15 862	4 421	-22 618	-18 206	-5 114	-3 993	-9 100	-4 412
May	-52	22 888	18 430	2 307	16 122	4 458	-22 940	-18 467	-5 086	-4 018	-9 363	-4 473
June	111	23 416	18 941	2 303	16 638	4 475	-23 305	-18 784	-5 061	-4 071	-9 652	-4 520
July	419	24 163	19 692	2 304	17 388	4 471	-23 744	-19 187	-5 064	-4 147	-9 976	-4 557
August	769	24 955	20 496	2 320	18 176	4 458	-24 185	-19 606	-5 115	-4 231	-10 259	-4 579
September	1 126	25 590	21 138	2 353	18 785	4 452	-24 464	-19 880	-5 182	-4 288	-10 411	-4 584
October(d)	1 345	25 971	21 508	2 409	19 099	4 463	-24 625	-20 051	-5 225	-4 440	-10 386	-4 574
November	1 589	25 908	21 414	2 474	18 940	4 494	-24 319	-19 767	-5 225	-4 386	-10 156	-4 552
December	1 621	25 417	20 878	2 528	18 350	4 539	-23 796	-19 271	-5 182	-4 338	-9 751	-4 525
2009												
January	1 605	24 719	20 138	2 568	17 569	4 581	-23 114	-18 614	-5 112	-4 229	-9 273	-4 500
February	1 569	24 030	19 415	2 602	16 813	4 615	-22 461	-17 979	-5 043	-4 127	-8 809	-4 482
March	1 507	23 397	18 753	2 629	16 124	4 644	-21 890	-17 419	-4 992	-4 035	-8 392	-4 471
April	1 369	22 819	18 156	2 638	15 518	4 663	-21 450	-16 984	-4 954	-3 964	-8 066	-4 466

(a) For sign conventions, see paragraph 11 of the Explanatory Notes.

(b) For all time periods, estimates for sugar, sugar preparations and honey are included in Non-rural and other goods.

(c) A trend break of \$2,725m has been applied to Non-rural and other goods credits and related aggregates in April 2008.

(d) A trend break of \$167m has been applied to Capital goods, n.e.s. debits and related aggregates in October 2008.

GOODS AND SERVICES (a), Summary: Original

	BALANCE	CREDITS					DEBITS					
	On goods and services	Total goods and services	Total goods	Rural goods(b)	Non-rural and other goods(b)	Total services	Total goods and services	Total goods	Con- sumption goods	Capital goods	Inter- mediate and other goods	Total services
FINANCIAL YEAR												
2005-06	-14 520	196 274	154 425	25 266	129 159	41 849	-210 794	-169 716	-50 221	-40 077	-79 418	-41 078
2006-07	-12 757	215 695	169 514	25 075	144 439	46 181	-228 452	-184 024	-54 913	-41 765	-87 346	-44 428
2007-08	-21 508	233 835	182 816	25 480	157 336	51 019	-255 343	-205 089	-59 371	-45 351	-100 367	-50 254
MONTHS												
2008												
February	-2 480	18 222	13 747	2 137	11 610	4 475	-20 702	-16 885	-4 812	-3 640	-8 433	-3 817
March	-1 017	20 061	15 537	2 370	13 167	4 524	-21 078	-17 007	-4 594	-4 120	-8 293	-4 071
April	-987	21 159	16 711	2 432	14 279	4 448	-22 146	-17 850	-4 958	-3 748	-9 144	-4 296
May	-452	22 477	18 104	2 626	15 478	4 373	-22 929	-18 608	-5 016	-3 821	-9 771	-4 321
June	137	22 652	18 428	2 172	16 256	4 224	-22 515	-17 912	-4 769	-4 224	-8 919	-4 603
July	-1 023	23 413	18 858	2 149	16 709	4 555	-24 436	-19 764	-5 284	-4 048	-10 432	-4 672
August	1 832	25 170	20 662	2 288	18 374	4 508	-23 338	-18 771	-5 073	-4 208	-9 490	-4 567
September	-176	26 008	21 786	2 217	19 569	4 222	-26 184	-21 210	-5 578	-4 555	-11 077	-4 974
October	1 899	28 940	24 314	2 677	21 637	4 626	-27 041	-22 203	-6 134	-4 809	-11 260	-4 838
November	621	26 466	21 903	2 506	19 397	4 563	-25 845	-21 409	-5 790	-4 756	-10 863	-4 436
December	506	25 625	21 115	2 610	18 505	4 510	-25 119	-20 382	-5 528	-5 515	-9 339	-4 737
2009												
January	-238	21 997	17 474	2 199	15 275	4 523	-22 235	-17 593	-4 846	-4 045	-8 702	-4 642
February	2 533	23 328	18 645	2 518	16 127	4 683	-20 795	-16 873	-4 047	-4 154	-8 672	-3 922
March	2 996	24 950	20 138	2 985	17 153	4 812	-21 954	-17 654	-4 944	-4 349	-8 361	-4 300
April	157	21 097	16 351	2 530	13 821	4 746	-20 940	-16 572	-4 732	-4 008	-7 832	-4 368
FINANCIAL YEAR TO DATE												
10 months ended April												
2008	-21 193	188 706	146 284	20 682	125 602	42 422	-209 899	-168 569	-49 586	-37 306	-81 677	-41 330
2009	9 107	246 994	201 246	24 679	176 567	45 748	-237 887	-192 431	-51 956	-44 447	-96 028	-45 456

(a) For sign conventions, see paragraph 11 of the Explanatory Notes.

(b) For all time periods, estimates for sugar, sugar preparations and honey are included in Non-rural and other goods.

							10 MONTHS ENDED APRIL		Change %
	2005-06	2006-07	2007-08	Feb 2009	Mar 2009	Apr 2009	2008	2009	
	\$m	\$m	\$m	\$m	\$m	\$m	\$m	\$m	
Total goods credits	154 425	169 514	182 816	18 645	20 138	16 351	146 284	201 246	37.6
<i>Rural goods</i>	25 266	25 075	25 480	2 518	2 985	2 530	20 682	24 679	19.3
Meat and meat preparations	6 709	7 078	6 540	627	687	566	5 337	6 299	18.0
Cereal grains and cereal preparations	4 852	4 171	4 976	687	927	709	3 741	5 704	52.5
Wool and sheepskins	2 544	3 065	2 796	205	227	187	2 372	1 985	-16.3
Other rural(a)	11 161	10 761	11 168	999	1 144	1 068	9 232	10 691	15.8
<i>Non-rural goods</i>	118 210	131 813	143 138	13 668	14 826	12 290	113 535	158 981	40.0
Metal ores and minerals	28 934	35 315	41 337	4 231	4 585	3 699	32 531	45 166	38.8
Coal, coke and briquettes	24 352	21 928	24 599	3 970	4 182	3 437	17 603	48 603	176.1
Other mineral fuels	13 218	15 642	18 889	1 481	1 402	1 236	15 169	18 324	20.8
Metals (excl. non-monetary gold)	11 271	14 820	14 038	786	881	851	11 441	10 633	-7.1
Machinery	8 066	8 422	8 792	724	787	662	7 347	7 597	3.4
Transport equipment	5 314	4 648	5 719	328	400	258	4 608	4 657	1.1
Other manufactures	14 996	16 268	17 000	1 370	1 563	1 323	14 104	14 830	5.1
Other non-rural (incl. sugar and beverages)	12 059	14 770	12 764	778	1 026	824	10 732	9 171	-14.5
<i>Other goods</i>	10 949	12 626	14 198	2 459	2 327	1 531	12 067	17 586	45.7
Goods for processing	368	417	276	110	93	105	231	693	200.0
Repairs on goods	74	90	103	7	8	4	83	78	-6.0
Goods procured in ports by carriers	1 420	1 379	1 547	129	121	100	1 262	1 439	14.0
Non-monetary gold	9 087	10 740	12 272	2 213	2 105	1 322	10 491	15 376	46.6

(a) For all time periods, estimates for sugar, sugar preparations and honey are included in Other non-rural.

GOODS DEBITS(a): Original

	10 MONTHS ENDED APRIL								
	2005-06	2006-07	2007-08	Feb 2009	Mar 2009	Apr 2009	2008	2009	Change
	\$m	\$m	\$m	\$m	\$m	\$m	\$m	\$m	%
Total goods debits	-169 716	-184 024	-205 089	-16 873	-17 654	-16 572	-168 569	-192 431	14.2
<i>Consumption goods</i>	-50 221	-54 913	-59 371	-4 047	-4 944	-4 732	-49 586	-51 956	4.8
Food and beverages, mainly for consumption	-6 169	-7 182	-7 840	-616	-755	-695	-6 589	-7 543	14.5
Household electrical items	-4 191	-4 525	-5 051	-318	-362	-459	-4 202	-4 522	7.6
Non-industrial transport equipment	-13 596	-14 894	-16 872	-664	-865	-871	-13 894	-11 241	-19.1
Textiles, clothing and footwear	-6 364	-6 805	-7 051	-707	-755	-666	-6 036	-7 206	19.4
Toys, books and leisure goods	-4 057	-4 328	-4 561	-296	-403	-384	-3 767	-4 398	16.8
Consumption goods n.e.s.	-15 844	-17 179	-17 996	-1 446	-1 804	-1 657	-15 098	-17 046	12.9
<i>Capital goods</i>	-40 077	-41 765	-45 351	-4 154	-4 349	-4 008	-37 306	-44 447	19.1
Machinery and industrial equipment	-14 347	-15 330	-16 480	-1 283	-1 807	-1 345	-13 703	-16 030	17.0
ADP equipment	-6 158	-7 008	-7 074	-473	-623	-613	-5 872	-6 089	3.7
Telecommunications equipment	-5 320	-5 315	-5 790	-488	-623	-521	-4 840	-5 402	11.6
Civil aircraft(b)	-2 967	-1 667	-2 691	na	na	na	-1 982	na	na
Industrial transport equipment n.e.s.	-5 491	-6 454	-7 554	-397	-411	-300	-6 134	-5 881	-4.1
Capital goods n.e.s.(b)	-5 794	-5 991	-5 762	-1 513	-885	-1 229	-4 775	-9 521	99.4
<i>Intermediate and other merchandise goods</i>	-72 737	-79 923	-90 618	-6 727	-7 056	-6 990	-73 838	-83 389	12.9
Food and beverages, mainly for industry	-651	-819	-923	-84	-93	-96	-761	-1 019	33.9
Primary industrial supplies n.e.s.	-1 186	-1 552	-1 477	-79	-142	-89	-1 210	-1 704	40.8
Fuels and lubricants	-21 014	-21 470	-29 697	-1 885	-1 697	-1 736	-23 624	-24 452	3.5
Parts for transport equipment	-7 315	-8 355	-8 833	-559	-670	-631	-7 311	-7 439	1.8
Parts for ADP equipment	-1 857	-1 620	-1 115	-73	-102	-82	-925	-897	-3.0
Other parts for capital goods	-10 166	-11 780	-11 990	-1 033	-1 249	-1 275	-9 901	-11 994	21.1
Organic and inorganic chemicals	-4 133	-4 406	-4 673	-437	-358	-405	-3 842	-4 653	21.1
Paper and paperboard	-2 303	-2 368	-2 359	-175	-192	-161	-1 975	-2 104	6.5
Textile yarn and fabrics	-1 361	-1 366	-1 334	-94	-115	-100	-1 121	-1 159	3.4
Iron and steel	-3 240	-3 817	-3 721	-420	-341	-340	-3 001	-5 039	67.9
Plastics	-2 517	-2 957	-3 064	-207	-242	-215	-2 549	-2 638	3.5
Processed industrial supplies n.e.s.	-15 863	-17 794	-20 013	-1 591	-1 778	-1 632	-16 415	-18 920	15.3
Other merchandise goods(b)	-1 131	-1 619	-1 419	-90	-77	-228	-1 203	-1 371	14.0
<i>Other goods</i>	-6 681	-7 423	-9 749	-1 945	-1 305	-842	-7 839	-12 639	61.2
Goods for processing	-445	-507	-233	-1	-166	-1	-85	-636	. .
Repairs on goods	-115	-131	-117	-25	-27	-15	-95	-166	74.7
Goods procured in ports by carriers	-1 406	-1 468	-1 771	-151	-150	-169	-1 399	-1 690	20.8
Non-monetary gold	-4 715	-5 317	-7 628	-1 768	-962	-657	-6 260	-10 147	62.1

. . not applicable

na not available

(a) For sign conventions, see paragraph 11 of the Explanatory Notes.

(b) From December 2008, the Civil aircraft series and commodities subject to a 'no commodity details' or 'no value details' restriction are included in Capital goods n.e.s.. From September to November 2008 commodities with these restrictions are included in Civil aircraft and for earlier periods are included in Other merchandise goods.

	Jul 2008	Aug 2008	Sep 2008	Oct 2008	Nov 2008	Dec 2008	Jan 2009	Feb 2009	Mar 2009	Apr 2009
	\$m	\$m	\$m	\$m	\$m	\$m	\$m	\$m	\$m	\$m
Total goods credits	18 720	20 018	21 736	23 034	21 828	20 272	19 008	19 936	19 805	17 011
<i>Rural goods</i>	2 226	2 290	2 261	2 565	2 481	2 530	2 486	2 567	2 839	2 519
Meat and meat preparations	585	590	629	724	654	632	611	654	636	581
Cereal grains and cereal preparations	489	509	394	500	471	627	568	600	872	638
Wool and sheepskins	217	212	216	242	202	187	183	197	184	179
Other rural(a)	935	979	1 022	1 099	1 153	1 084	1 124	1 117	1 147	1 121
<i>Non-rural goods</i>	14 871	16 240	17 956	18 668	17 732	16 189	14 873	14 904	14 642	12 950
Metal ores and minerals	4 486	4 680	5 527	5 003	4 359	4 001	4 329	4 498	4 449	4 019
Coal, coke and briquettes(b)	3 845	4 774	5 492	6 409	6 280	5 485	4 438	4 316	4 106	3 487
Other mineral fuels(c)	1 839	1 760	1 901	2 086	2 076	1 940	1 728	1 666	1 551	1 418
Metals (excl. non-monetary gold)(c)	1 214	1 303	1 296	1 259	1 190	1 018	880	886	845	877
Machinery	717	773	752	799	876	761	700	781	766	674
Transport equipment	513	526	538	620	470	493	433	368	404	269
Other manufactures	1 444	1 468	1 527	1 545	1 554	1 511	1 455	1 486	1 516	1 373
Other non-rural (incl. sugar and beverages)	814	955	923	948	928	981	910	904	1 005	833
<i>Other goods</i>	1 623	1 487	1 519	1 801	1 615	1 554	1 649	2 465	2 325	1 541
Goods for processing(d)	31	40	36	100	52	47	79	110	93	105
Repairs on goods(d)	9	10	8	5	8	12	7	7	8	4
Goods procured in ports by carriers(c)	148	158	162	168	158	140	134	135	119	110
Non-monetary gold(d)	1 435	1 279	1 313	1 528	1 397	1 355	1 429	2 213	2 105	1 322

(a) For all time periods, estimates for sugar, sugar preparations and honey are included in Other non-rural.

(b) Only a length-of-month effect has been applied to this component.

(c) In using these seasonally adjusted series, care should be exercised because of the difficulties associated with reliably estimating the seasonal pattern.

(d) This component is not seasonally adjusted.

GOODS DEBITS(a): Seasonally Adjusted

	Jul 2008	Aug 2008	Sep 2008	Oct 2008	Nov 2008	Dec 2008	Jan 2009	Feb 2009	Mar 2009	Apr 2009
	\$m	\$m	\$m	\$m	\$m	\$m	\$m	\$m	\$m	\$m
Total goods debits	-19 502	-18 853	-20 298	-20 252	-20 677	-19 968	-18 428	-18 407	-17 657	-17 269
<i>Consumption goods</i>	-5 146	-5 065	-5 099	-5 234	-5 339	-5 433	-5 170	-4 481	-5 145	-5 107
Food and beverages, mainly for consumption	-693	-696	-736	-751	-751	-778	-760	-680	-786	-736
Household electrical items	-513	-374	-408	-444	-475	-434	-459	-387	-422	-496
Non-industrial transport equipment	-1 388	-1 427	-1 275	-1 202	-1 171	-1 229	-1 005	-792	-889	-886
Textiles, clothing and footwear	-601	-614	-649	-707	-734	-777	-751	-646	-778	-741
Toys, books and leisure goods	-427	-385	-429	-446	-447	-464	-449	-379	-465	-461
Consumption goods n.e.s.	-1 524	-1 569	-1 602	-1 684	-1 760	-1 752	-1 746	-1 598	-1 804	-1 787
<i>Capital goods</i>	-4 036	-4 247	-4 426	-4 446	-4 415	-5 236	-4 440	-4 792	-4 242	-4 195
Machinery and industrial equipment	-1 515	-1 524	-1 533	-1 606	-1 648	-1 660	-1 586	-1 536	-1 747	-1 474
ADP equipment	-552	-596	-596	-752	-682	-658	-598	-594	-586	-599
Telecommunications equipment	-499	-480	-555	-571	-546	-484	-558	-592	-599	-529
Civil aircraft(b)(c)	-180	-382	-512	-185	-265	na	na	na	na	na
Industrial transport equipment n.e.s.	-805	-779	-746	-669	-612	-600	-500	-450	-418	-325
Capital goods n.e.s.(b)	-485	-487	-485	-664	-661	-1 834	-1 198	-1 621	-891	-1 268
<i>Intermediate and other merchandise goods</i>	-9 149	-8 490	-9 547	-9 556	-9 140	-8 316	-7 501	-7 189	-6 965	-7 125
Food and beverages, mainly for industry	-79	-90	-104	-108	-119	-109	-107	-97	-102	-100
Primary industrial supplies n.e.s.(d)	-177	-178	-157	-171	-253	-193	-191	-100	-138	-92
Fuels and lubricants(c)	-3 663	-2 691	-3 202	-3 291	-2 417	-2 050	-1 820	-1 885	-1 697	-1 736
Parts for transport equipment	-773	-808	-811	-812	-841	-722	-683	-622	-662	-648
Parts for ADP equipment	-86	-84	-88	-90	-118	-93	-91	-88	-91	-88
Other parts for capital goods	-1 010	-1 078	-1 152	-1 197	-1 305	-1 285	-1 266	-1 162	-1 242	-1 263
Organic and inorganic chemicals	-434	-466	-494	-517	-596	-526	-451	-420	-347	-412
Paper and paperboard	-207	-208	-223	-223	-223	-206	-207	-192	-191	-182
Textile yarn and fabrics	-106	-111	-117	-131	-123	-124	-115	-106	-114	-112
Iron and steel	-430	-486	-568	-622	-581	-656	-463	-449	-328	-367
Plastics	-269	-262	-281	-300	-282	-265	-234	-232	-248	-230
Processed industrial supplies n.e.s.	-1 799	-1 878	-1 984	-1 994	-2 213	-1 997	-1 791	-1 745	-1 728	-1 668
Other merchandise goods(b)(c)	-117	-149	-366	-101	-70	-90	-83	-90	-77	-228
<i>Other goods</i>	-1 171	-1 051	-1 226	-1 016	-1 783	-983	-1 317	-1 945	-1 305	-842
Goods for processing(c)	-155	-1	-1	-1	-139	-1	-170	-1	-166	-1
Repairs on goods(c)	-11	-11	-16	-11	-17	-22	-11	-25	-27	-15
Goods procured in ports by carriers(c)	-199	-199	-202	-156	-156	-157	-151	-151	-150	-169
Non-monetary gold(e)	-806	-840	-1 007	-848	-1 471	-803	-985	-1 768	-962	-657

na not available

(a) For sign conventions, see paragraph 11 of the Explanatory Notes.

(b) From December 2008, the Civil aircraft series and commodities subject to a 'no commodity details' or 'no value details' restriction are included in Capital goods n.e.s.. From September to November 2008 commodities with these restrictions are included in Civil aircraft and for earlier periods are included in Other merchandise goods.

(c) These components are not seasonally adjusted.

(d) In using these seasonally adjusted series, care should be exercised because of the difficulties associated with reliably estimating the seasonal pattern.

(e) From October 1995, this component is not seasonally adjusted.

	Jul 2008	Aug 2008	Sep 2008	Oct 2008	Nov 2008	Dec 2008	Jan 2009	Feb 2009	Mar 2009	Apr 2009
	\$m	\$m	\$m	\$m	\$m	\$m	\$m	\$m	\$m	\$m
Total goods credits	19 692	20 496	21 138	21 508	21 414	20 878	20 138	19 415	18 753	18 156
<i>Rural goods</i>	2 304	2 320	2 353	2 409	2 474	2 528	2 568	2 602	2 629	2 638
Meat and meat preparations	607	623	637	650	656	651	640	628	617	605
Cereal grains and cereal preparations	518	491	472	477	510	560	612	659	699	725
Wool and sheepskins	211	214	216	214	208	200	192	187	182	178
Other rural(a)	968	992	1 028	1 068	1 100	1 117	1 124	1 128	1 130	1 129
<i>Non-rural goods</i>	15 997	16 700	17 244	17 485	17 242	16 564	15 685	14 848	14 109	13 490
Metal ores and minerals(b)	4 674	4 809	4 834	4 772	4 633	4 469	4 342	4 269	4 217	4 214
Coal, coke and briquettes(c)	4 469	4 979	5 451	5 752	5 740	5 427	4 944	4 451	4 010	3 615
Other mineral fuels	1 922	1 938	1 958	1 971	1 954	1 896	1 796	1 680	1 570	1 469
Metals (excl. non-monetary gold)	1 260	1 271	1 262	1 217	1 140	1 050	966	899	850	817
Machinery	740	759	777	790	793	784	767	749	732	714
Transport equipment	528	540	543	535	514	479	437	394	355	319
Other manufactures	1 473	1 491	1 505	1 520	1 526	1 516	1 497	1 477	1 456	1 436
Other non-rural (incl. sugar and beverages)	931	915	915	927	941	944	938	929	919	906
<i>Other goods</i>	1 391	1 476	1 541	1 614	1 698	1 787	1 884	1 965	2 016	2 028
Goods for processing	34	42	49	57	65	72	80	88	97	102
Repairs on goods	9	9	8	8	8	8	8	8	7	6
Goods procured in ports by carriers	153	157	159	159	154	147	137	129	121	114
Non-monetary gold	1 195	1 269	1 324	1 390	1 471	1 560	1 659	1 740	1 791	1 806

- (a) For all time periods, estimates for sugar, sugar preparations and honey are included in Other non-rural.
- (b) A trend break of \$725m has been applied to metal ores and minerals, and related aggregates in April 2008. This trend break will be reassessed with the annual seasonal reanalysis to be incorporated with results to be published in the August 2009 issue. Trend estimates from April 2008 should be used with caution.

- (c) A trend break of \$2,000m has been applied to coal, coke and briquettes, and related aggregates in April 2008. This trend break will be reassessed with the annual seasonal reanalysis to be incorporated with results to be published in the August 2009 issue. Trend estimates from April 2008 should be used with caution.

GOODS DEBITS(a): Trend Estimates

	Jul 2008	Aug 2008	Sep 2008	Oct 2008	Nov 2008	Dec 2008	Jan 2009	Feb 2009	Mar 2009	Apr 2009
	\$m	\$m	\$m	\$m	\$m	\$m	\$m	\$m	\$m	\$m
Total goods debits	-19 187	-19 606	-19 880	-20 051	-19 767	-19 271	-18 614	-17 979	-17 419	-16 984
<i>Consumption goods</i>	-5 064	-5 115	-5 182	-5 225	-5 225	-5 182	-5 112	-5 043	-4 992	-4 954
Food and beverages, mainly for consumption	-704	-716	-730	-742	-750	-752	-750	-746	-743	-741
Household electrical items	-397	-407	-420	-431	-438	-440	-439	-439	-441	-444
Non-industrial transport equipment	-1 384	-1 345	-1 304	-1 249	-1 177	-1 095	-1 015	-943	-883	-837
Textiles, clothing and footwear	-614	-637	-666	-695	-718	-732	-737	-737	-738	-736
Toys, books and leisure goods	-410	-420	-429	-436	-441	-442	-442	-441	-441	-443
Consumption goods n.e.s.	-1 555	-1 590	-1 632	-1 671	-1 701	-1 720	-1 729	-1 737	-1 746	-1 752
<i>Capital goods</i>	-4 147	-4 231	-4 288	-4 440	-4 386	-4 338	-4 229	-4 127	-4 035	-3 964
Machinery and industrial equipment	-1 506	-1 534	-1 564	-1 593	-1 613	-1 622	-1 619	-1 610	-1 597	-1 579
ADP equipment	-572	-602	-635	-659	-665	-653	-631	-610	-593	-575
Telecommunications equipment	-494	-511	-524	-535	-543	-549	-555	-560	-564	-567
Civil aircraft(b)	-335	-339	-334	-313	-283	na	na	na	na	na
Industrial transport equipment n.e.s.	-749	-752	-732	-691	-634	-571	-512	-457	-406	-364
Capital goods n.e.s.(b)(c)	-491	-494	-499	-649	-646	np	np	np	np	np
<i>Intermediate and other merchandise goods</i>	-8 914	-9 139	-9 234	-9 133	-8 824	-8 365	-7 869	-7 426	-7 062	-6 803
Food and beverages, mainly for industry	-86	-93	-101	-106	-110	-109	-107	-104	-101	-99
Primary industrial supplies n.e.s.	-160	-174	-187	-196	-196	-187	-170	-148	-127	-107
Fuels and lubricants	-3 202	-3 181	-3 052	-2 827	-2 545	-2 260	-2 018	-1 827	-1 681	-1 590
Parts for transport equipment	-793	-807	-812	-802	-777	-741	-703	-670	-645	-625
Parts for ADP equipment	-86	-89	-92	-95	-97	-96	-95	-92	-90	-87
Other parts for capital goods	-1 063	-1 103	-1 153	-1 202	-1 238	-1 254	-1 252	-1 246	-1 241	-1 235
Organic and inorganic chemicals	-452	-482	-509	-525	-523	-503	-470	-435	-404	-377
Paper and paperboard	-211	-214	-218	-219	-216	-211	-204	-197	-190	-185
Textile yarn and fabrics	-110	-114	-118	-121	-122	-120	-117	-114	-111	-109
Iron and steel	-455	-508	-558	-589	-589	-557	-506	-451	-398	-352
Plastics	-274	-279	-281	-279	-273	-263	-252	-242	-234	-228
Processed industrial supplies n.e.s.	-1 867	-1 925	-1 981	-2 017	-2 012	-1 963	-1 884	-1 802	-1 728	-1 665
Other merchandise goods(b)	-154	-171	-174	-155	-126	-101	-90	-97	-111	-143
<i>Other goods</i>	-1 062	-1 120	-1 177	-1 253	-1 332	-1 386	-1 404	-1 383	-1 330	-1 262
Goods for processing	-55	-48	-41	-43	-55	-70	-80	-82	-79	-71
Repairs on goods	-12	-12	-13	-14	-16	-18	-19	-20	-21	-22
Goods procured in ports by carriers	-196	-192	-184	-173	-163	-156	-153	-153	-154	-158
Non-monetary gold	-800	-868	-938	-1 022	-1 098	-1 143	-1 152	-1 128	-1 076	-1 012

na not available

np not available for publication but included in totals where applicable, unless otherwise indicated

(a) For sign conventions, see paragraph 11 of the Explanatory Notes.

(b) From December 2008, the Civil aircraft series and commodities subject to a 'no commodity details' or 'no value details' restriction are included in Capital goods n.e.s.. From September to November 2008 commodities with these restrictions are included in Civil aircraft and for earlier periods are included in Other merchandise goods. Trend estimates for the Capital goods n.e.s. series from December 2008 have been suppressed due to the change in the composition of the series.

(c) A trend break of \$167m has been applied to Capital goods, n.e.s. debits and related aggregates in October 2008.

SERVICES (a)(b), Summary—Original

							10 MONTHS ENDED APRIL		Change
	2005-06	2006-07	2007-08	Feb 2009	Mar 2009	Apr 2009	2008	2009	
	\$m	\$m	\$m	\$m	\$m	\$m	\$m	\$m	
Services credits	41 849	46 181	51 019	4 683	4 812	4 746	42 422	45 748	7.8
Transportation services	8 208	8 617	9 216	708	692	656	7 735	7 192	-7.0
Passenger(c)	4 104	4 237	4 118	360	346	294	3 553	3 340	-6.0
Freight	608	609	621	48	46	50	517	559	8.1
Other	3 496	3 771	4 477	300	300	312	3 665	3 293	-10.2
Travel services	22 624	25 161	28 227	2 727	2 872	2 742	23 567	25 813	9.5
Other services	11 017	12 403	13 576	1 248	1 248	1 348	11 120	12 743	14.6
Services debits	-41 078	-44 428	-50 254	-3 922	-4 300	-4 368	-41 330	-45 456	10.0
Transportation services	-14 508	-15 360	-16 380	-1 072	-1 209	-1 061	-13 485	-13 813	2.4
Passenger(c)	-6 284	-6 876	-7 278	-425	-514	-432	-5 886	-5 347	-9.2
Freight	-7 776	-8 036	-8 600	-595	-647	-583	-7 192	-7 964	10.7
Other	-448	-448	-502	-52	-48	-46	-407	-502	23.3
Travel services	-15 090	-15 934	-18 204	-1 198	-1 434	-1 604	-15 096	-15 673	3.8
Other services	-11 480	-13 134	-15 670	-1 652	-1 657	-1 703	-12 749	-15 970	25.3
Memorandum items:									
Tourism related service credits(d)	26 728	29 398	32 345	3 087	3 218	3 036	27 120	29 153	7.5
Tourism related service debits(d)	-21 374	-22 810	-25 482	-1 623	-1 948	-2 036	-20 982	-21 020	0.2

(a) For sign conventions, see paragraph 11 of the Explanatory Notes.

(b) For more detailed trade in services components, see table 11.

(c) Passenger services includes agency fees and commission receipts for air transport.

(d) For a more detailed explanation of tourism related services, see paragraphs 18 and 19 of the Explanatory Notes.

	Jul 2008	Aug 2008	Sep 2008	Oct 2008	Nov 2008	Dec 2008	Jan 2009	Feb 2009	Mar 2009	Apr 2009
	\$m	\$m	\$m	\$m	\$m	\$m	\$m	\$m	\$m	\$m
SEASONALLY ADJUSTED										
Services credits	4 483	4 405	4 396	4 472	4 492	4 546	4 608	4 613	4 635	4 669
Transportation services	763	755	749	681	695	701	699	691	675	676
Passenger(b)	333	324	318	305	317	325	339	332	321	318
Freight(c)	65	65	63	53	54	52	52	52	50	52
Other(c)	365	367	367	323	324	324	308	307	304	306
Travel services	2 490	2 409	2 396	2 526	2 522	2 563	2 610	2 619	2 651	2 671
Other services(c)	1 229	1 241	1 251	1 265	1 274	1 282	1 299	1 304	1 310	1 322
Services debits	-4 523	-4 598	-4 591	-4 551	-4 614	-4 527	-4 443	-4 459	-4 482	-4 502
Transportation services	-1 462	-1 464	-1 487	-1 488	-1 506	-1 429	-1 272	-1 211	-1 214	-1 156
Passenger(b)	-604	-606	-594	-568	-544	-506	-484	-505	-505	-491
Freight	-816	-816	-851	-862	-904	-862	-736	-654	-661	-618
Other(d)	-42	-42	-42	-58	-58	-62	-52	-52	-48	-46
Travel services	-1 547	-1 606	-1 563	-1 533	-1 559	-1 542	-1 515	-1 566	-1 572	-1 625
Other services(c)	-1 514	-1 528	-1 541	-1 530	-1 549	-1 556	-1 656	-1 682	-1 695	-1 721
Memorandum items:										
Tourism related service credits(e)	2 824	2 732	2 715	2 831	2 840	2 888	2 949	2 951	2 971	2 990
Tourism related service debits(e)	-2 151	-2 212	-2 158	-2 101	-2 103	-2 047	-1 999	-2 071	-2 078	-2 116

TREND ESTIMATES

Services credits	4 471	4 458	4 452	4 463	4 494	4 539	4 581	4 615	4 644	4 663
Transportation services	767	748	729	714	702	695	691	686	682	681
Passenger(b)	330	323	318	318	320	324	326	327	327	326
Freight	60	61	60	58	55	53	52	51	51	51
Other	378	364	351	338	327	319	312	308	304	303
Travel services	2 471	2 467	2 470	2 486	2 518	2 559	2 596	2 625	2 650	2 665
Other services	1 233	1 243	1 253	1 263	1 274	1 285	1 294	1 304	1 312	1 318
Services debits	-4 557	-4 579	-4 584	-4 574	-4 552	-4 525	-4 500	-4 482	-4 471	-4 466
Transportation services	-1 475	-1 489	-1 492	-1 479	-1 444	-1 389	-1 323	-1 259	-1 203	-1 156
Passenger(b)	-625	-609	-587	-562	-539	-521	-507	-498	-492	-489
Freight	-806	-833	-856	-865	-850	-812	-761	-709	-661	-620
Other	-45	-46	-49	-52	-55	-56	-55	-53	-50	-47
Travel services	-1 575	-1 571	-1 563	-1 552	-1 544	-1 543	-1 549	-1 560	-1 575	-1 590
Other services	-1 507	-1 520	-1 529	-1 542	-1 564	-1 593	-1 628	-1 663	-1 694	-1 720
Memorandum items:										
Tourism related service credits(e)	2 801	2 790	2 788	2 804	2 838	2 883	2 922	2 953	2 977	2 991
Tourism related service debits(e)	-2 200	-2 180	-2 150	-2 114	-2 083	-2 064	-2 056	-2 058	-2 066	-2 079

(a) For sign conventions, see paragraph 11 of the Explanatory Notes.

(b) Passenger services includes agency fees and commission receipts for air transport.

(c) In using these seasonally adjusted series, care should be exercised because of the difficulties associated with reliably estimating the seasonal pattern.

(d) This component is not seasonally adjusted.

(e) For a more detailed explanation of tourism related services, see paragraphs 18 and 19 of the Explanatory Notes.

	CREDITS				DEBITS			
	<i>Jun Qtr</i>	<i>Sep Qtr</i>	<i>Dec Qtr</i>	<i>Mar Qtr</i>	<i>Jun Qtr</i>	<i>Sep Qtr</i>	<i>Dec Qtr</i>	<i>Mar Qtr</i>
	2008	2008	2008	2009	2008	2008	2008	2009
	\$m	\$m	\$m	\$m	\$m	\$m	\$m	\$m
Services	13 045	13 285	13 699	14 018	-13 220	-14 213	-14 011	-12 864
Transportation services	2 271	2 261	2 123	2 152	-4 244	-4 555	-4 702	-3 495
Passenger(c)	896	949	987	1 110	-1 949	-1 938	-1 602	-1 375
Freight	155	201	166	142	-2 154	-2 491	-2 922	-1 968
Other	1 220	1 111	970	900	-141	-126	-178	-152
Travel services	7 089	7 345	7 604	8 122	-4 613	-5 080	-4 575	-4 414
Business	687	704	640	657	-811	-775	-618	-688
Personal	6 402	6 641	6 964	7 465	-3 802	-4 305	-3 957	-3 726
Education-related	3 767	4 174	3 723	4 329	-201	-309	-175	-211
Other	2 635	2 467	3 241	3 136	-3 601	-3 996	-3 782	-3 515
Communication services(d)	216	297	237	258	-229	-324	-366	-363
Construction services	8	42	30	24	—	—	—	—
Insurance services	181	186	186	186	-233	-243	-243	-243
Financial services	258	270	270	270	-155	-162	-162	-162
Computer and information services	425	453	465	405	-394	-399	-420	-432
Royalties and license fees	220	228	177	159	-888	-876	-885	-792
Other business services	1 974	1 797	2 208	2 001	-1 947	-1 872	-2 157	-2 328
Merchandising and other trade-related	321	249	288	255	-53	-63	-60	-51
Operational leasing	23	30	33	36	-219	-183	-222	-243
Miscellaneous business, professional and technical	1 630	1 518	1 887	1 710	-1 675	-1 626	-1 875	-2 034
Legal, accounting, management consulting and public relations	279	342	399	372	-165	-165	-210	-261
Advertising, market research and public opinion polling	64	90	117	81	-66	-42	-54	-57
Research and development	134	159	165	129	-41	-60	-90	-81
Architectural, engineering and other technical services	520	420	522	573	-496	-468	-573	-627
Agriculture, mining and on-site processing	99	90	72	69	-391	-348	-369	-420
Services between affiliated enterprises n.i.e.	335	237	390	282	-256	-267	-270	-228
Other	199	180	222	204	-260	-276	-309	-360
Personal, cultural, and recreational services	186	192	198	225	-277	-510	-288	-432
Audiovisual and related services	52	36	36	63	-248	-480	-237	-336
Personal, cultural and recreational services	134	156	162	162	-29	-30	-51	-96
Government services n.i.e.	217	214	201	216	-240	-192	-213	-203
Memorandum items:								
Tourism related services(e)	7 985	8 294	8 591	9 232	-6 562	-7 018	-6 177	-5 789

— nil or rounded to zero (including null cells)

(a) For sign conventions, see paragraph 11 of the Explanatory Notes.

(b) For more information see paragraphs 15 and 16 of the Explanatory Notes.

(c) Passenger services includes agency fees and commission receipts for air transport.

(d) Communications services includes other services n.i.e.

(e) For a more detailed explanation of tourism related services, see paragraphs 18 and 19 of the Explanatory Notes.

				Per cent of total merchandise exports(b)	10 MONTHS ENDED APRIL	
	Feb	Mar	Apr		2008	2009
	2009	2009	2009			
	\$m	\$m	\$m	%	\$m	\$m
MAJOR COMMODITIES (c)						
011 Meat of bovine animals	402	456	370	2.3	3 551	4 280
041 Wheat and meslin	473	700	544	3.3	2 113	4 060
268 Wool and other animal hair	180	194	165	1.0	2 119	1 715
281 Iron ore and concentrates	2 826	3 172	2 503	15.3	15 659	29 792
283 Copper ores and concentrates	226	233	280	1.7	3 561	2 813
285 Aluminium ores and concentrates	482	427	394	2.4	4 885	5 387
321 Coal, not agglomerated	3 965	4 146	3 413	20.8	17 471	48 392
333 Crude petroleum oils	597	535	496	3.0	7 556	7 206
334 Refine petroleum oils	209	202	174	1.1	3 040	2 390
343 Natural gas	737	686	591	3.6	4 711	9 088
682 Copper	185	138	165	1.0	2 549	2 306
684 Aluminium	347	415	340	2.1	4 547	4 630
781 Motor vehicles for transport of people	173	156	98	0.6	2 667	2 534
971 Gold, non-monetary	2 155	2 028	1 257	7.7	10 287	14 827

SECTION AND DIVISION OF THE SITC

0	Food and live animals					
00	Live animals other than fish, crustaceans, molluscs and aquatic invertebrates	85	104	87	0.5	796 978
01	Meat and meat preparations	627	682	566	3.5	5 339 6 295
02	Dairy products and birds' eggs	221	219	205	1.3	2 210 2 237
03	Fish (not marine mammals), crustaceans, molluscs and aquatic invertebrates, and preparations thereof	85	90	88	0.5	900 982
04	Cereals and cereal preparations	689	921	709	4.3	3 738 5 701
05	Vegetables and fruit	140	166	168	1.0	1 095 1 310
06	Sugars, sugar preparations and honey	24	25	13	0.1	189 215
07	Coffee, tea, cocoa, spices, and manufactures thereof	26	28	24	0.1	217 245
08	Feeding stuff for animals (excl. unmilled cereals)	116	125	128	0.8	678 1 135
09	Miscellaneous edible products and preparations	56	57	50	0.3	394 548
	<i>Total Food and live animals</i>	<i>2 070</i>	<i>2 416</i>	<i>2 039</i>	<i>12.4</i>	<i>15 555 19 645</i>
1	Beverages and tobacco					
11	Beverages	198	226	191	1.2	2 397 2 198
12	Tobacco and tobacco manufactures	11	9	12	0.1	111 112
	<i>Total Beverages and tobacco</i>	<i>208</i>	<i>234</i>	<i>203</i>	<i>1.2</i>	<i>2 508 2 310</i>
2	Crude materials, inedible, except fuels					
21	Hides, skins and furskins, raw	42	57	41	0.2	574 558
22	Oil-seeds and oleaginous fruits	61	128	97	0.6	325 583
23	Crude rubber (incl. synthetic and reclaimed)	1	1	1	—	6 10
24	Cork and wood	74	86	80	0.5	1 049 1 028
25	Pulp and waste paper	17	20	16	0.1	216 220
26	Textile fibres and their wastes (not manufactured into yarn or fabric)	215	222	207	1.3	2 523 2 141
27	Crude fertilizers (excl. those of Division 56) and crude minerals (excl. coal, petroleum and precious stones)	30	30	13	0.1	399 296
28	Metalliferous ores and metal scrap	4 147	4 518	3 761	23.0	31 976 44 709
29	Crude animal and vegetable materials, n.e.s.	15	20	19	0.1	165 202
	<i>Total Crude materials, inedible, except fuels</i>	<i>4 603</i>	<i>5 081</i>	<i>4 235</i>	<i>25.8</i>	<i>37 234 49 747</i>
3	Mineral fuels, lubricants and related materials					
32	Coal, coke and briquettes	3 970	4 154	3 437	21.0	17 601 48 590
33	Petroleum, petroleum products and related materials	807	738	672	4.1	10 612 9 611
34	Gas, natural and manufactured	808	747	655	4.0	5 715 9 975
	<i>Total Mineral fuels, lubricants and related materials</i>	<i>5 584</i>	<i>5 639</i>	<i>4 764</i>	<i>29.1</i>	<i>33 928 68 176</i>

— nil or rounded to zero (including null cells)

(a) Some SITC sections and divisions exclude commodities subject to a confidentiality restriction. These are included in Division 98. For more information see paragraph 17 of the Explanatory Notes.

(b) Per cent of total merchandise is calculated for the most recent month.

(c) The 'Major commodities' section lists commodities at the SITC Rev 4 3-digit level which are the most significant (by value) or are of particular interest. Abbreviated descriptors have been used. The list of 'Major commodities' is reviewed annually.

	Feb	Mar	Apr	Per cent	10 MONTHS	
	2009	2009	2009	of total	ENDED APRIL	
	\$m	\$m	\$m	merchandise	2008	2009
			exports(b)	%	\$m	\$m
SECTION AND DIVISION OF THE SITC						
4	Animal and vegetable oils, fats and waxes					
41	25	28	23	0.1	298	269
42	18	12	11	0.1	83	149
43	Fats and oils (processed), waxes and inedible mixtures or preparations, of animal or vegetable origin, n.e.s.					
	1	1	3	—	11	12
	44	41	36	0.2	393	431
5	Chemicals and related products, nes					
51	11	17	10	0.1	145	141
52	40	73	38	0.2	715	475
53	40	56	58	0.4	514	480
54	286	356	303	1.9	3 315	3 298
55	Essential oils and resinoids and perfume materials; toilet, polishing and cleansing preparations					
	49	60	50	0.3	466	518
56	33	19	17	0.1	231	657
57	21	23	22	0.1	294	253
58	33	40	37	0.2	270	332
59	83	111	77	0.5	730	927
	594	754	613	3.7	6 680	7 082
6	Manufactured goods classified chiefly by material					
61	19	24	23	0.1	313	230
62	15	20	21	0.1	220	217
63	14	16	13	0.1	132	137
64	Paper, paperboard, and articles of paper pulp, of paper or of paperboard					
	54	59	56	0.3	580	563
65	31	30	29	0.2	331	304
66	133	54	64	0.4	643	749
67	80	70	83	0.5	1 137	1 224
68	714	792	768	4.7	10 302	9 399
69	82	86	95	0.6	889	918
	1 141	1 151	1 152	7.0	14 546	13 741
7	Machinery and transport equipment					
71	68	72	56	0.3	1 008	753
72	157	180	152	0.9	1 450	1 633
73	17	14	12	0.1	176	158
74	General industrial machinery and equipment, n.e.s. and machine parts, n.e.s.					
	152	160	158	1.0	1 410	1 587
75	102	106	77	0.5	947	1 025
76	Telecommunications and sound recording and reproducing apparatus and equipment					
	93	103	78	0.5	759	940
77	Electrical machinery, apparatus and appliances, parts (incl. non-electrical counterparts of electrical domestic equip)					
	131	145	124	0.8	1 556	1 456
78	245	227	164	1.0	3 690	3 374
79	83	138	93	0.6	920	1 248
	1 048	1 145	914	5.6	11 915	12 176

— nil or rounded to zero (including null cells)

(b) Per cent of total merchandise is calculated for the most recent month.

(a) Some SITC sections and divisions exclude commodities subject to a confidentiality restriction. These are included in Division 98. For more information see paragraph 17 of the Explanatory Notes.

				Per cent of total merchandise exports(b)	10 MONTHS ENDED APRIL	
	Feb 2009	Mar 2009	Apr 2009		2008	2009
	\$m	\$m	\$m		\$m	\$m
SECTION AND DIVISION OF THE SITC						
8	Miscellaneous manufactured articles					
81	Prefabricated buildings and sanitary, plumbing, heating and lighting fixtures and fittings, n.e.s.	15	11	9	0.1	113 118
82	Furniture, parts thereof; bedding, mattresses, mattress supports, cushions and similar stuffed furnishings	13	11	7	—	90 107
83	Travel goods, handbags and similar containers	2	3	2	—	25 26
84	Articles of apparel and clothing accessories	21	23	18	0.1	219 205
85	Footwear	4	5	3	—	39 43
87	Professional, scientific and controlling instruments and apparatus, n.e.s.	181	209	180	1.1	1 558 1 867
88	Photographic apparatus, equipment and supplies and optical goods, n.e.s.; watches and clocks	31	37	28	0.2	270 313
89	Miscellaneous manufactured articles, n.e.s.	164	201	159	1.0	1 961 1 906
	<i>Total Miscellaneous manufactured articles</i>	431	500	407	2.5	4 275 4 586
9	Commodities and transactions not classified elsewhere in the SITC					
93	Special transactions and commodities not classified according to kind	179	166	173	1.1	1 013 1 439
95	Gold coin whether or not legal tender, and other coin being legal tender	57	81	65	0.4	206 559
96	Coin (excl. gold coin), not being legal tender	—	—	—	—	— —
97	Gold, non-monetary (excl. gold ores and concentrates)	2 155	2 028	1 257	7.7	10 287 14 827
98	Combined confidential items excl. some of SITC 280 (exports only) and some of SITCs 510 and 520 (imports only)	405	575	525	3.2	6 424 4 971
	<i>Total Commodities and transactions not classified elsewhere in the SITC</i>	2 796	2 849	2 019	12.3	17 930 21 796
	Total merchandise exports	18 521	19 811	16 383	100.0	144 964 199 689
	Balance of Payments Adjustments	124	327	-32	. .	1 320 1 557
	Goods credits (exports) on a Balance of Payments Basis	18 645	20 138	16 351	. .	146 284 201 246

. . not applicable

— nil or rounded to zero (including null cells)

(a) Some SITC sections and divisions exclude commodities subject to a confidentiality restriction. These are included in Division 98. For more information see paragraph 17 of the Explanatory Notes.

(b) Per cent of total merchandise is calculated for the most recent month.

				Per cent of total merchandise imports(b)	10 MONTHS ENDED APRIL	
	Feb	Mar	Apr		
	2009	2009	2009		2008	2009
	\$m	\$m	\$m	%	\$m	\$m
MAJOR COMMODITIES (c)						
333 Crude petroleum oils	885	744	872	5.4	13 868	12 398
334 Refined petroleum oils	823	812	724	4.5	9 038	10 653
542 Medicaments	586	751	649	4.0	5 394	6 039
641 Paper and paperboard	152	162	131	0.8	1 679	1 759
723 Civil engineering and contractors' plant and equipment	208	243	236	1.5	3 243	3 077
751 Office machines	124	177	144	0.9	1 569	1 656
752 Automatic data processing machines	375	508	512	3.2	4 579	4 914
761 Televisions	168	155	254	1.6	2 563	2 399
764 Telecommunications equipment	555	701	598	3.7	5 660	6 163
781 Motor vehicles for the transport of people	564	750	771	4.8	12 355	9 756
782 Motor vehicles for the transport of goods	309	330	232	1.4	4 955	4 523
784 Parts and accessories of motor vehicles	155	192	183	1.1	2 188	2 119
971 Gold, non-monetary	1 768	1 127	657	4.0	5 935	10 271

SECTION AND DIVISION OF THE SITC

0	Food and live animals					
00	Live animals other than fish, crustaceans, molluscs and aquatic invertebrates	14	11	10	0.1	98
01	Meat and meat preparations	47	66	46	0.3	339
02	Dairy products and birds' eggs	43	44	48	0.3	508
03	Fish (not marine mammals), crustaceans, molluscs and aquatic invertebrates, and preparations thereof	99	110	99	0.6	958
04	Cereals and cereal preparations	53	69	66	0.4	533
05	Vegetables and fruit	126	141	123	0.8	1 283
06	Sugars, sugar preparations and honey	18	21	20	0.1	193
07	Coffee, tea, cocoa, spices, and manufactures thereof	83	101	93	0.6	807
08	Feeding stuff for animals (excl. unmilled cereals)	49	54	27	0.2	400
09	Miscellaneous edible products and preparations	97	139	139	0.9	1 171
	<i>Total Food and live animals</i>	<i>628</i>	<i>755</i>	<i>671</i>	<i>4.1</i>	<i>6 291</i>
1	Beverages and tobacco					
11	Beverages	92	115	110	0.7	1 124
12	Tobacco and tobacco manufactures	17	30	32	0.2	152
	<i>Total Beverages and tobacco</i>	<i>110</i>	<i>145</i>	<i>142</i>	<i>0.9</i>	<i>1 276</i>
2	Crude materials, inedible, except fuels					
21	Hides, skins and furskins, raw	—	—	—	—	2
22	Oil seeds and oleaginous fruits	4	4	5	—	47
23	Crude rubber (incl. synthetic and reclaimed)	9	11	10	0.1	151
24	Cork and wood	50	48	41	0.3	551
25	Pulp and waste paper	22	20	9	0.1	251
26	Textile fibres and their wastes (not manufactured into yarn or fabric)	10	11	10	0.1	116
27	Crude fertilisers (excl. those of Division 56) and crude minerals (excl. coal, petroleum and precious stones)	6	16	13	0.1	203
28	Metalliferous ores and metal scrap	5	19	8	0.1	472
29	Crude animal and vegetable materials, n.e.s.	31	30	27	0.2	254
	<i>Total Crude materials, inedible, except fuels</i>	<i>138</i>	<i>157</i>	<i>124</i>	<i>0.8</i>	<i>2 047</i>
3	Mineral fuels, lubricants and related materials					
32	Coal, coke and briquettes	1	1	1	—	12
33	Petroleum, petroleum products and related materials	1 742	1 619	1 655	10.2	23 363
34	Gas, natural and manufactured	256	231	232	1.4	968
	<i>Total Mineral fuels, lubricants and related materials</i>	<i>1 999</i>	<i>1 851</i>	<i>1 888</i>	<i>11.6</i>	<i>24 343</i>

— nil or rounded to zero (including null cells)

(a) Some SITC sections and divisions exclude commodities subject to a confidentiality restriction. These are included in Division 98. For more information see paragraph 17 of the Explanatory Notes.

(b) Per cent of total merchandise is calculated for the most recent month.

(c) The 'Major commodities' section lists commodities at the SITC Rev 4 3-digit level which are the most significant (by value) or are of particular interest. Abbreviated descriptors have been used. The list of 'Major commodities' is reviewed annually.

	Feb	Mar	Apr	Per cent	10 MONTHS	
	2009	2009	2009	of total	ENDED APRIL	
	\$m	\$m	\$m	merchandise	2008	2009
				imports(b)		
				%	\$m	\$m
SECTION AND DIVISION OF THE SITC						
4	Animal and vegetable oils, fats and waxes					
41	Animal oils and fats	1	2	7	—	28 35
42	Fixed vegetable fats and oils, crude, refined or fractionated	35	42	36	0.2	370 444
43	Fats and oils (processed), waxes and inedible mixtures or preparations, of animal or vegetable origin, n.e.s.	4	5	4	—	45 55
	<i>Total Animal and vegetable oils, fats and waxes</i>	40	49	46	0.3	443 534
5	Chemicals and related products, n.e.s.					
51	Organic chemicals	314	227	272	1.7	2 869 2 928
52	Inorganic chemicals	123	131	133	0.8	977 1 727
53	Dyeing, tanning and colouring materials	48	52	50	0.3	528 601
54	Medicinal and pharmaceutical products	714	909	832	5.1	6 620 7 467
55	Essential oils and resinoids and perfume materials; toilet, polishing and cleansing preparations	132	175	154	0.9	1 380 1 534
56	Fertilisers (excl. crude)	119	134	164	1.0	1 147 1 544
57	Plastics in primary forms	110	125	114	0.7	1 457 1 423
58	Plastics in non-primary forms	97	118	101	0.6	1 093 1 216
59	Chemical materials and products, n.e.s.	159	170	175	1.1	1 569 1 859
	<i>Total Chemicals and related products, n.e.s.</i>	1 816	2 040	1 996	12.3	17 639 20 298
6	Manufactured goods classified chiefly by material					
61	Leather, leather manufactures, and dressed furskins, n.e.s.	11	13	14	0.1	151 147
62	Rubber manufactures, n.e.s.	201	233	234	1.4	2 064 2 310
63	Cork and wood manufactures (excl. furniture)	61	60	51	0.3	558 607
64	Paper, paperboard, and articles of paper pulp, of paper or of paperboard	208	230	196	1.2	2 287 2 469
65	Textile yarn, fabrics, made-up articles, n.e.s., and related products	191	221	205	1.3	2 112 2 231
66	Non-metallic mineral manufactures, n.e.s.	210	255	213	1.3	2 059 2 407
67	Iron and steel	420	341	340	2.1	3 001 5 042
68	Non-ferrous metals	153	159	89	0.5	1 704 1 707
69	Manufactures of metals, n.e.s.	404	461	414	2.6	3 997 4 923
	<i>Total Manufactured goods classified chiefly by material</i>	1 859	1 972	1 754	10.8	17 934 21 843
7	Machinery and transport equipment					
71	Power generating machinery and equipment	443	497	459	2.8	3 676 4 679
72	Machinery specialised for particular industries	522	588	589	3.6	6 503 6 948
73	Metal working machinery	45	82	56	0.3	646 659
74	General industrial machinery and equipment, n.e.s. and machine parts, n.e.s.	839	1 230	959	5.9	8 162 10 187
75	Office machines and automatic data processing machines	581	795	745	4.6	7 168 7 577
76	Telecommunications and sound recording and reproducing apparatus and equipment	786	953	934	5.8	9 307 9 670
77	Electrical machinery, apparatus, appliances, parts (incl. non-elec. counterparts of electrical domestic equip)	699	903	806	5.0	7 492 8 594
78	Road vehicles (incl. air-cushion vehicles)	1 153	1 407	1 312	8.1	21 381 18 315
79	Transport equipment (excl. road vehicles)	183	159	126	0.8	4 137 3 138
	<i>Total Machinery and transport equipment</i>	5 253	6 615	5 988	36.9	68 472 69 768

— nil or rounded to zero (including null cells)

(b) Per cent of total merchandise is calculated for the most recent month.

(a) Some SITC sections and divisions exclude commodities subject to a confidentiality restriction. These are included in Division 98. For more information see paragraph 17 of the Explanatory Notes.

				Per cent of total merchandise imports(b)	10 MONTHS ENDED APRIL		
	Feb	Mar	Apr			
	2009	2009	2009		2008	2009	
	\$m	\$m	\$m	%	\$m	\$m	
SECTION AND DIVISION OF THE SITC							
8	Miscellaneous manufactured articles						
81	Prefabricated buildings; sanitary, plumbing, heating and lighting fixtures and fittings, n.e.s.						
	53	63	70	0.4	588	708	
82	Furniture, parts thereof; bedding, mattresses, mattress supports, cushions and similar stuffed furnishings						
	169	203	218	1.3	2 174	2 442	
83	Travel goods, handbags and similar containers						
	55	59	64	0.4	579	721	
84	Articles of apparel and clothing accessories						
	480	517	464	2.9	3 914	4 809	
85	Footwear						
	121	124	91	0.6	1 034	1 233	
87	Professional, scientific and controlling instruments and apparatus, n.e.s.						
	376	452	396	2.4	3 621	4 178	
88	Photographic apparatus, equipment and supplies and optical goods, n.e.s.; watches and clocks						
	115	128	113	0.7	1 133	1 280	
89	Miscellaneous manufactured articles, n.e.s.						
	690	883	961	5.9	8 059	9 630	
	<i>Total Miscellaneous manufactured articles</i>	<i>2 060</i>	<i>2 429</i>	<i>2 378</i>	<i>14.7</i>	<i>21 104</i>	<i>25 001</i>
9	Commodities and transactions not classified elsewhere in the SITC						
93	Special transactions and commodities not classified according to kind						
	9	6	4	—	35	49	
95	Gold coin whether or not legal tender, and other coin being legal tender						
	—	1	—	—	4	5	
96	Coin (excl. gold coin), not being legal tender						
	—	—	—	—	—	1	
97	Gold, non-monetary (excl. gold ores and concentrates)						
	1 768	1 127	657	4.0	5 935	10 271	
98	Combined confidential items excl some of SITC 280 (exports only) and some of SITCs 510 and 520 (imports only)						
	852	166	578	3.6	444	4 155	
	<i>Total Commodities and transactions not classified elsewhere in the SITC</i>	<i>2 630</i>	<i>1 299</i>	<i>1 239</i>	<i>7.6</i>	<i>6 419</i>	<i>14 481</i>
	Total merchandise imports	16 531	17 314	16 228	100.0	165 968	189 092
	Balance of Payments Adjustment	342	340	344	..	2 601	3 339
	Goods Debits (imports) on a Balance of Payments Basis	16 873	17 654	16 572	..	168 569	192 431

.. not applicable

— nil or rounded to zero (including null cells)

(a) Some SITC sections and divisions exclude commodities subject to a confidentiality restriction. These are included in Division 98. For more information see paragraph 17 of the Explanatory Notes.

(b) Per cent of total merchandise is calculated for the most recent month.

	EXPORTS				IMPORTS (b)				BALANCE OF MERCHANDISE TRADE	
	2007-08	Apr 2009	10	10	2007-08	Apr 2009	10	10	2007-08	10
			months ended April 2008	months ended April 2009			Months Ended April 2008	Months Ended April 2009		
\$m	\$m	\$m	\$m	\$m	\$m	\$m	\$m	\$m	\$m	
Belgium	1 327	60	1 052	1 215	1 727	105	1 410	1 508	-400	-293
Brazil	936	28	714	1 342	1 041	39	840	951	-105	392
Canada	1 620	76	1 354	1 258	2 187	129	1 812	2 169	-567	-911
China	27 034	3 670	21 357	32 138	30 994	2 933	25 808	31 869	-3 960	269
Denmark	177	14	145	148	895	74	723	914	-718	-766
Egypt(c)	310	46	248	367	17	2	15	29	292	338
Fiji	380	21	311	320	122	11	100	132	258	189
Finland	1 138	27	901	557	945	66	761	854	194	-297
France	1 500	132	1 110	1 522	4 989	323	4 060	4 070	-3 488	-2 548
Germany	1 450	123	1 150	1 908	10 576	886	8 616	9 537	-9 126	-7 629
Hong Kong (Sar of China)	2 838	308	2 337	2 727	1 380	95	1 169	1 222	1 458	1 504
India	9 328	1 499	7 550	12 779	1 606	250	1 336	1 847	7 722	10 932
Indonesia	3 957	331	3 273	3 561	4 585	338	3 755	4 236	-629	-675
Iran	164	135	141	598	54	3	35	90	110	508
Iraq	94	4	9	105	23	—	23	31	71	74
Ireland	241	8	194	114	2 006	188	1 645	1 956	-1 764	-1 842
Israel	254	12	173	221	685	41	531	631	-431	-411
Italy	1 456	70	1 238	1 438	4 895	397	4 079	4 536	-3 439	-3 098
Japan	34 967	2 924	27 213	47 088	19 679	1 416	16 375	15 263	15 288	31 825
Korea, Republic of	14 240	1 205	11 380	16 771	6 163	505	5 143	5 311	8 076	11 460
Kuwait	577	42	469	385	363	33	257	381	213	4
Malaysia	3 426	223	2 748	3 110	8 081	566	6 668	7 136	-4 656	-4 026
Mexico	551	57	453	729	1 238	86	982	1 133	-687	-404
Netherlands	2 864	106	2 257	2 920	1 555	138	1 286	1 534	1 309	1 387
New Zealand	9 529	611	7 829	7 290	7 044	527	5 826	6 028	2 485	1 262
Pakistan	491	86	434	403	154	17	131	155	336	249
Papua New Guinea	1 616	160	1 265	1 347	2 748	245	2 298	2 597	-1 132	-1 251
Philippines	1 280	118	1 130	1 262	763	30	631	498	517	764
Saudi Arabia	2 247	139	1 862	2 031	908	95	813	816	1 339	1 215
Singapore	5 226	443	4 290	4 669	13 685	660	10 274	11 975	-8 459	-7 306
South Africa	2 408	115	2 092	1 836	1 497	78	1 220	1 106	911	730
Spain	902	10	722	552	1 996	110	1 635	1 488	-1 094	-936
Sweden	445	49	321	526	2 461	175	2 037	2 099	-2 015	-1 572
Switzerland	944	134	839	527	2 129	201	1 762	2 064	-1 186	-1 537
Taiwan	6 479	636	5 140	7 133	4 127	232	3 435	3 604	2 352	3 529
Thailand	4 645	479	3 641	4 252	8 846	683	7 181	9 334	-4 201	-5 082
Turkey	655	42	518	772	404	49	325	447	251	325
United Arab Emirates	3 133	215	2 539	3 294	2 542	197	2 060	1 534	591	1 760
United Kingdom	8 309	419	7 109	10 523	8 498	763	7 014	8 047	-189	2 475
United States of America	10 602	809	8 533	10 206	24 325	1 953	20 083	21 806	-13 723	-11 600
Viet Nam	1 814	100	1 591	988	5 133	210	4 142	3 728	-3 319	-2 740
Other Countries(b)	9 305	696	7 332	8 756	9 241	1 379	7 672	14 427	64	-5 670
Total	180 857	16 383	144 964	199 689	202 307	16 228	165 968	189 092	-21 451	10 597
APEC	131 015	12 250	104 437	145 738	143 827	10 711	118 032	130 620	-12 812	15 117
ASEAN	20 471	1 704	16 781	17 961	42 219	2 514	33 727	37 881	-21 747	-19 920
Developing Countries	95 171	10 300	76 361	105 201	97 810	7 401	79 800	91 948	-2 638	13 253
Least Developed Countries	1 637	174	1 350	1 761	243	39	206	216	1 394	1 545
European Union(d)	20 462	1 063	16 718	21 837	43 226	3 449	35 457	39 249	-22 764	-17 412
OECD	93 496	6 921	74 760	106 394	107 367	8 392	88 609	94 442	-13 871	11 952

— nil or rounded to zero (including null cells)

(a) See Time series spreadsheets for details of all countries.

(b) From September 2008 imports data with confidentiality restrictions 'no commodity details' or 'no value details' are included in Other countries.

(c) Exports of Alumina to Egypt are excluded from country total and included in the 'Other Countries' category.

(d) The European Union includes 27 member countries.

	2007-08	Apr 2009	10 MONTHS ENDED APRIL	
			2008	2009
			\$m	\$m
EXPORTS (a)				
New South Wales	30 091	2 690	24 504	33 351
Victoria	20 539	1 503	16 946	17 463
Queensland	35 318	3 734	26 988	49 202
South Australia	10 338	701	8 245	8 104
Western Australia	68 843	6 484	55 600	75 735
Tasmania	3 635	231	2 943	2 858
Northern Territory	4 544	353	3 460	5 429
Australian Capital Territory	4	—	4	10
State not available for publication(b)	895	32	712	721
Re-exports	6 650	653	5 561	6 814
Total	180 857	16 383	144 964	199 689
IMPORTS				
New South Wales	75 906	6 063	62 898	67 354
Victoria	56 058	4 096	45 974	48 852
Queensland	32 360	2 420	26 409	29 308
South Australia	7 342	456	6 046	5 960
Western Australia	27 355	2 144	22 009	28 814
Tasmania	691	94	548	852
Northern Territory	2 581	375	2 075	3 905
Australian Capital Territory	14	—	9	7
State not available for publication(c)	—	578	—	4 040
Total	202 307	16 228	165 968	189 092

— nil or rounded to zero (including null cells)

(a) State in which the final stage of production or manufacture occurs.

(b) Exports of Alumina to Bahrain, Egypt and Iceland are excluded from the state totals and included in 'State not available for publication'.

(c) From September 2008 imports data with confidentiality restrictions 'no commodity details' or 'no value details' are included in State not available for publication.

PERIOD AVERAGE EXCHANGE RATES (a): Per Australian dollar

<i>Period</i>	<i>United States dollar</i>	<i>UK pound sterling</i>	<i>Euro</i>	<i>Japanese yen</i>	<i>Trade-weighted index of value of the A\$(b)</i>
FINANCIAL YEAR					
2005-06	0.7474	0.4205	0.6143	85.90	63.3
2006-07	0.7863	0.4066	0.6018	93.21	64.8
2007-08	0.8968	0.4479	0.6099	98.63	69.7
MONTHS					
2008					
February	0.9128	0.4647	0.6192	97.84	70.2
March	0.9260	0.4622	0.5964	93.36	69.8
April	0.9298	0.4695	0.5899	95.30	70.0
May	0.9491	0.4828	0.6098	98.90	72.2
June	0.9508	0.4840	0.6116	101.75	72.8
July	0.9625	0.4840	0.6102	102.71	73.3
August	0.8810	0.4668	0.5890	96.33	68.6
September	0.8205	0.4558	0.5700	87.49	64.9
October	0.6894	0.4070	0.5173	69.20	56.1
November	0.6557	0.4279	0.5155	63.55	54.4
December	0.6690	0.4480	0.4973	61.02	54.6
2009					
January	0.6784	0.4678	0.5095	61.37	55.4
February	0.6490	0.4503	0.5074	59.97	54.2
March	0.6646	0.4680	0.5093	64.92	56.0
April	0.7122	0.4846	0.5398	70.24	59.1

- (a) These exchange rates and the trade-weighted index are derived using rates provided by the Reserve Bank of Australia in respect of each trading day.
- (b) May 1970 = 100. The Trade-weighted index is reweighted annually on 1 October and on special occasions as required.

EXPLANATORY NOTES

INTRODUCTION

1 This publication presents preliminary estimates of Australia's international trade in goods and services on a balance of payments basis and merchandise import and export statistics on a recorded trade basis.

2 Merchandise trade statistics on a recorded trade basis are compiled from information submitted by exporters and importers or their agents to the Australian Customs Service (ACS). Adjustments for coverage, timing and valuation are made to recorded trade data to convert them to a balance of payments basis. The main source for services data is the quarterly Survey of International Trade in Services.

3 More comprehensive quarterly estimates of Australia's trade in goods and services, together with comprehensive details of Australia's balance of payments are included in the quarterly publication, *Balance of Payments and International Investment Position, Australia* (cat. no. 5302.0). Detailed monthly statistics on merchandise trade are available on Time Series Spreadsheets or by subscription to tailored services.

CONCEPTS, SOURCES AND METHODS

4 The conceptual framework used in compiling Australia's merchandise trade statistics can be found in *International Merchandise Trade, Australia: Concepts, Sources and Methods, 2001* (cat. no. 5489.0).

5 The conceptual framework used in compiling Australia's balance of payments statistics is based on the Fifth Edition of the International Monetary Fund's *Balance of Payments Manual* (BPM5,1993). Descriptions of the underlying concepts and structure of the balance of payments and the sources, methods and terms used in compiling the estimates are presented in *Balance of Payments and International Investment Position, Australia: Concepts, Sources and Methods, 1998* (cat. no. 5331.0). To bring merchandise trade statistics on a recorded trade basis to a balance of payments basis, timing adjustments are made to ensure that the transaction is recorded in the period in which ownership changed, rather than in the period in which the transaction was recorded by ACS. Adjustments are also made to account for the change of ownership of goods not included in merchandise trade statistics. Chapter 6 of cat. no. 5331.0 provides more detail on the relationship between statistics on international merchandise trade on a recorded trade basis and on a balance of payments basis.

6 Both of the Concepts, Sources and Methods publications are available to download for free from the ABS website. Select *Methods, Classifications, Concepts & Standards*, then choose *ABS concepts, classifications and statistical standards* and then the catalogue numbers as above.

SEASONAL ADJUSTMENT

7 The estimates of international trade in goods and services on a balance of payments basis are seasonally adjusted, however the merchandise exports and imports statistics on a recorded trade basis are not. Monthly original estimates are volatile, being subject to calendar-related and large irregular influences. Seasonally adjusted estimates are derived by estimating and removing from the original series systematic calendar related effects, such as seasonal, trading day, length of month and moving holiday influences. Seasonal adjustment does not aim to remove the irregular or non-seasonal influences which may be present in any particular month. These irregular influences may reflect both random economic events and difficulties of statistical recording.

8 The seasonally adjusted statistics in this publication use the concurrent seasonal adjustment technique and Autoregressive Integrated Moving Average (ARIMA) Modelling to estimate factors for the current and previous months. Under concurrent seasonal adjustment, the estimates of seasonal factors are fine tuned as new original estimates become available each period. The seasonally adjusted estimates are subject to revisions at each reference month as the estimates of seasonal factors are improved. For more information on seasonal adjustment methods, see *Information Paper: An Introductory Course on Time Series Analysis, Jan 2005* (cat. no. 1346.0.55.001), *Time Series Analysis*

EXPLANATORY NOTES *continued*

SEASONAL ADJUSTMENT

continued

Frequently Asked Questions, 2003 (cat. no. 1346.0.55.002), alternatively contact the Assistant Director, Time Series Analysis on (02) 6252 6345 or e-mail <time.series.analysis@abs.gov.au>.

ARIMA MODELLING

9 ARIMA modelling relies on the characteristics of the series being analysed to project future period data. ARIMA modelling is used on a case-by-case basis where it results in reduced revisions to seasonally adjusted series when subsequent data become available. The projected values are temporary, intermediate values, that are only used internally to improve the estimation of the seasonal factors. The projected data do not affect the original estimates and are discarded at the end of the seasonal adjustment process. The ARIMA model is assessed as part of the annual reanalysis and, following the 2008 annual re-analysis, 41 of the 42 directly seasonally adjusted trade in goods and services time series use an ARIMA model. For more information on the details of ARIMA modelling see *Feature article: Use of ARIMA modelling to reduce revisions* in the October 2004 issue of *Australian Economic Indicators* (cat. no. 1350.0).

TREND ESTIMATES

10 The month-to-month movements of the seasonally adjusted estimates may not be reliable indicators of trend behaviour because they include irregular or non-seasonal movements. Trend estimates are derived by applying a 13-term Henderson moving average to the seasonally adjusted series. The use of a 13-term Henderson average can result in revisions to the estimates for the most recent six months as additional observations become available. Revisions can also occur because of changes in the original data and as a result of the re-estimation of the seasonal factors. For more information on trend estimates methods, see *Information Paper: A Guide to Interpreting Time Series—Monitoring Trends* (cat. no. 1349.0), alternatively contact the Assistant Director, Time Series Analysis on (02) 6252 6345 or e-mail <time.series.analysis@abs.gov.au>.

SIGN CONVENTION

11 In keeping with balance of payments conventions, where statistics are on a balance of payments basis, credit entries (exports) are shown without sign and debit items (imports) are shown as negative entries. For statistics on a recorded trade basis, both imports and exports are shown without sign. The calculation of percentage changes on balance of payments debit items are made without regard to sign. References to balance of payments debit items in Key Figures, Key Points, and Analysis and Comments are also made without regard to sign.

COMMODITY BREAKDOWNS OF GOODS

12 For details of the classifications used to present goods exports (credits) and imports (debits) on a balance of payments basis, see tables 6.6 and 6.7, respectively, in *Balance of Payments and International Investment Position, Australia: Concepts, Sources and Methods, 1998* (cat. no. 5331.0).

13 The correspondences used to compile statistics on a Balance of Payments basis were updated in the July 2008 issue with estimates for all time periods recompiled on the basis of the revised correspondences to maintain consistency in the time series.

14 The recorded trade statistics shown in tables 12 and 13 are classified by the Standard International Trade Classification (SITC). Imports and exports of goods at a more detailed level are available from the Time Series spreadsheets. All data from July 2005 are presented according to SITC Rev 4 and data prior to July 2005 are presented according to SITC Rev 3. For details refer to the July 2008 issue of this publication.

COMMODITY BREAKDOWNS OF SERVICES

15 The quarterly detailed services data published in table 11 are consistent with the monthly aggregates shown in table 9.

EXPLANATORY NOTES *continued*

COMMODITY BREAKDOWNS OF SERVICES *continued*

16 Monthly indicators for many of the services components that are only surveyed quarterly are not available. In particular, the Freight and Other transportation components of Total services credits are not available for publication on a monthly basis. The estimates for these items shown in table 9 are therefore derived by dividing the quarterly estimate by three. Where quarterly survey data are not available, freight debits are derived directly from imports data for the reference month as a difference between total merchandise cost, insurance and freight (CIF) and free on board (FOB), adjusted to reflect timing and processing adjustments. For freight credits and other transportation credits and debits, estimates are derived by extrapolating the last month's data by an average of movements for the same month over the three previous years.

CONFIDENTIALITY OF MERCHANDISE TRADE STATISTICS

17 The release of statistics for certain merchandise trade commodities is restricted in order to prevent the identification of the activities of an individual business, where this is requested by the business concerned. These restrictions do not affect the total value of exports and imports, but they can affect statistics at the country, state and commodity levels. Imports data that have the confidentiality restrictions 'No commodity details' or 'No value details' are aggregated into a single confidential commodity code. For data prior to September 2008, these data are added back into the appropriate state total and country total (i.e. these totals show the correct level of trade). From September 2008 these confidential data are not added back. Instead the confidential data are published as 'No country details' in the country totals and 'State not available for publication' in the state totals. Therefore, country and state totals from September 2008 may not represent the actual amount of trade in each country/state but only the trade in commodities without a 'No commodity details' or 'No value details' restriction. For information on the confidentiality restrictions applied to the merchandise trade statistics in this publication, refer to the current *International merchandise trade: Confidential Commodities List (CCL)* (cat. no. 5372.0.55.001) which can be accessed from ABS web site.

TOURISM RELATED SERVICES

18 The tourism related services memorandum items provide timely indicators of the movements in tourism related activities, not an absolute measure of the level of these activities. These series are not compiled on a balance of payments conceptual basis. However, they do provide a reasonable approximation of world tourism related activities.

19 The memorandum items have been derived by re-aggregating relevant components of the international trade in services series of the balance of payments accounts. The tourism related indicator has been derived by combining total travel services (business, education-related and other personal travel) and passenger transportation services (which includes agency fees and commission receipts for air transport).

SERVICES BY STATE AND BY PARTNER COUNTRY

20 Annual services data by state and by partner country are released twice yearly. Calendar year data are usually released with the March issue of this publication and financial year data are released with the September issue. Refer to Time series data for details.

21 Services credits are classified by the state of provision, while services debits are classified by the state of consumption. The state allocations for transportation, travel and communication services are based on a number of indicators including merchandise trade statistics by state, overseas passenger arrivals and departures by state of clearance and data provided by the Department of Education, Science and Training. The allocation for other services (about 25% of all trade in services) is primarily based on the location of the business reporting the information, which serves as a proxy for the state of provision/consumption of that service. The data should be used with care but are considered suitable for analysis over time.

EXPLANATORY NOTES *continued*

SERVICES BY STATE AND BY PARTNER COUNTRY *continued*

22 A comprehensive explanation of the data sources used and the methodology applied in the compilation of partner country statistics is provided in Chapter 17 of *Balance of Payments and International Investment Position, Australia – Concepts, Sources and Methods* (cat. no. 5331.0). Approximately 7% of total services credits and 5% of total services debits for both 2006–07 and 2007–08 are either confidential, or unable to be allocated to individual countries.

ABS DATA AVAILABLE

23 More detailed balance of payments and recorded merchandise trade data, including forward seasonal factors are available as time series spreadsheets or data cubes from the ABS website.

24 More detailed merchandise trade data by commodity, country and state, and statistics included in this and related publications are available on request. Inquiries should be made to the National Information and Referral Service as shown on the back of this publication.

RELATED PRODUCTS AND PUBLICATIONS

25 Users may also wish to refer to the following publications which can be downloaded free of charge from the ABS web site:

- *Balance of Payments and International Investment Position, Australia* (cat. no. 5302.0) – issued quarterly
- *International Merchandise Imports, Australia* (cat. no. 5439.0) – issued monthly
- *International Trade Price Indexes, Australia* (cat. no. 6457.0) – issued quarterly
- *Balance of Payments and International Investment Position, Australia: Concepts, Sources and Methods* (cat. no. 5331.0)
- *Information Paper: Quality of Australian Balance of Payments Statistics* (cat. no. 5342.0)
- *International Merchandise Trade, Australia: Concepts, Sources and Methods* (cat. no. 5489.0)
- *A Guide to Australian Balance of Payments and International Investment Position Statistics* (cat. no. 5362.0.55.001).

26 Current publications and other products released by the ABS are available from the *Statistics View*. The ABS also issues a daily *Release Advice* on the web site which details products to be released in the week ahead.

CAUTIONARY NOTE

27 The tables in this publication are presented on two bases. Tables 1–11 contain estimates of Australia's international trade in goods and services which have been adjusted for coverage, valuation and timing to a balance of payments basis. Tables 12–15 contain estimates of merchandise exports and imports based on Australian Customs Service records. Paragraph 5 of the Explanatory Notes provides an explanation of the difference between these bases.

ROUNDING

28 Where figures have been rounded, discrepancies may occur between sums of the component items and totals. Percentage movements are calculated from data at the level of precision presented in this publication (i.e. \$m) except for international merchandise trade tables.

EXPLANATORY NOTES *continued*

ABBREVIATIONS

\$b	billion (thousand million) dollars
\$m	million dollars
ABS	Australian Bureau of Statistics
APEC	Asia Pacific Economic Co-operation
ASEAN	Association of South-East Asian Nations
n.e.s.	not elsewhere specified
n.i.e.	not included elsewhere
OECD	Organisation for Economic Co-operation and Development
SAR	Special Administrative Region
SITC	Standard International Trade Classification

APPENDIX RELATED ARTICLES

<i>Article</i>	<i>Source(a)</i>	<i>Issue</i>
Investment		
Foreign ownership of equity	5302.0	Sep qtr 2007
Kangaroo bonds	1301.0	2006
Foreign currency exposure	5308.0	Mar qtr 2005
Gross external debt	5302.0	Sep qtr 2003
Balance of payments		
International comparison of balance of payments statistics	(b)5363.0	1998-99
Merchandise trade		
Characteristics of Australian Exporters	5368.0.55.006	2007-08
Export and import invoice currencies, 2006	5368.0	Dec 2007
100 years of international trade statistics	5368.0	Oct 2007
New methodology for deriving counts of Australian exports	5368.0	Feb 2006
Australia's Importers, 2003-04	5368.0	Nov 2004
Australia's Exporters, 2003-04	5368.0	Oct 2004
Australia's trade with the USA	5368.0	Mar 2004
Foreign ownership of Australian exporters and importers	5496.0.55.001	2002-03
Major commodities traded by Australia, 1991 to 2000	(b)5422.0	Dec qtr 2000
Trade in services		
International trade in services by partner country, 2006, preliminary	5368.0	Dec 2006
Changes to International trade in services statistics, August 2006	5368.0	Aug 2006
Changes to International trade in services travel statistics	5368.0	Aug 2005
Finance		
Impact of the farm season on Australian production in 2002-03 and 2003-04	1301.0	2005
Recent trends in construction and first home buyers finance	5609.0	Mar 2002
Household sector data in the financial accounts	5232.0	Mar qtr 2002
Technical information		
Changes to International Trade in Goods Industry Statistics, July 2009	5368.0.55.011	Dec 2008
Technical note 1 - Income on debt	5302.0	Jun qtr 2008
Technical note 2 - Use of CDI data	5302.0	Jun qtr 2008
Impact of introducing Revision 4 of the Standard International Trade Classification	5368.0.55.010	2008
Changes to international trade statistics July 2008	5368.0.55.009	2007-08
Introduction of revised international standards in ABS economic statistics in 2009	5310.0.55.001	2007
Changes on 1 January 2007 to Statistical Codes in the AHECC and the Customs Tariff	1233.0.55.001	Nov 2006
ABS implementation in January 2007 of revisions to international trade classifications, 2007	5368.0.55.005	June 2006
Revised treatment of Goods for Processing in Merchandise Trade and Balance of Payments Statistics	5368.0	May 2006
Impact of Customs and ABS changes on import statistics from October 2005	5439.0	Oct 2005
ABS management of the impact of the implementation of the imports component of the New Customs System	5439.0	Aug 2005
Changes to country and port classifications	5368.0	May 2003
Implementation of New Customs Systems	5368.0	Aug 2004
The effect of customs changes on export statistics	5422.0	Jun qtr 2002
Data confidentiality	5422.0	Dec qtr 1999

- (a) In the ABS web site home page, select Statistics; By Catalogue Number; and click on the specified catalogue number and issue. Note: in some instances, a particular issue of the publication can be found in the Past & Future Releases page of the catalogue.
- (b) This article can be found in pdf format by referring to the Downloads page of the specified issue of this publication on the ABS web site.

FOR MORE INFORMATION . . .

INTERNET **www.abs.gov.au** the ABS website is the best place for data from our publications and information about the ABS.

INFORMATION AND REFERRAL SERVICE

Our consultants can help you access the full range of information published by the ABS that is available free of charge from our website. Information tailored to your needs can also be requested as a 'user pays' service. Specialists are on hand to help you with analytical or methodological advice.

PHONE 1300 135 070

EMAIL client.services@abs.gov.au

FAX 1300 135 211

POST Client Services, ABS, GPO Box 796, Sydney NSW 2001

FREE ACCESS TO STATISTICS

All statistics on the ABS website can be downloaded free of charge.

WEB ADDRESS www.abs.gov.au